

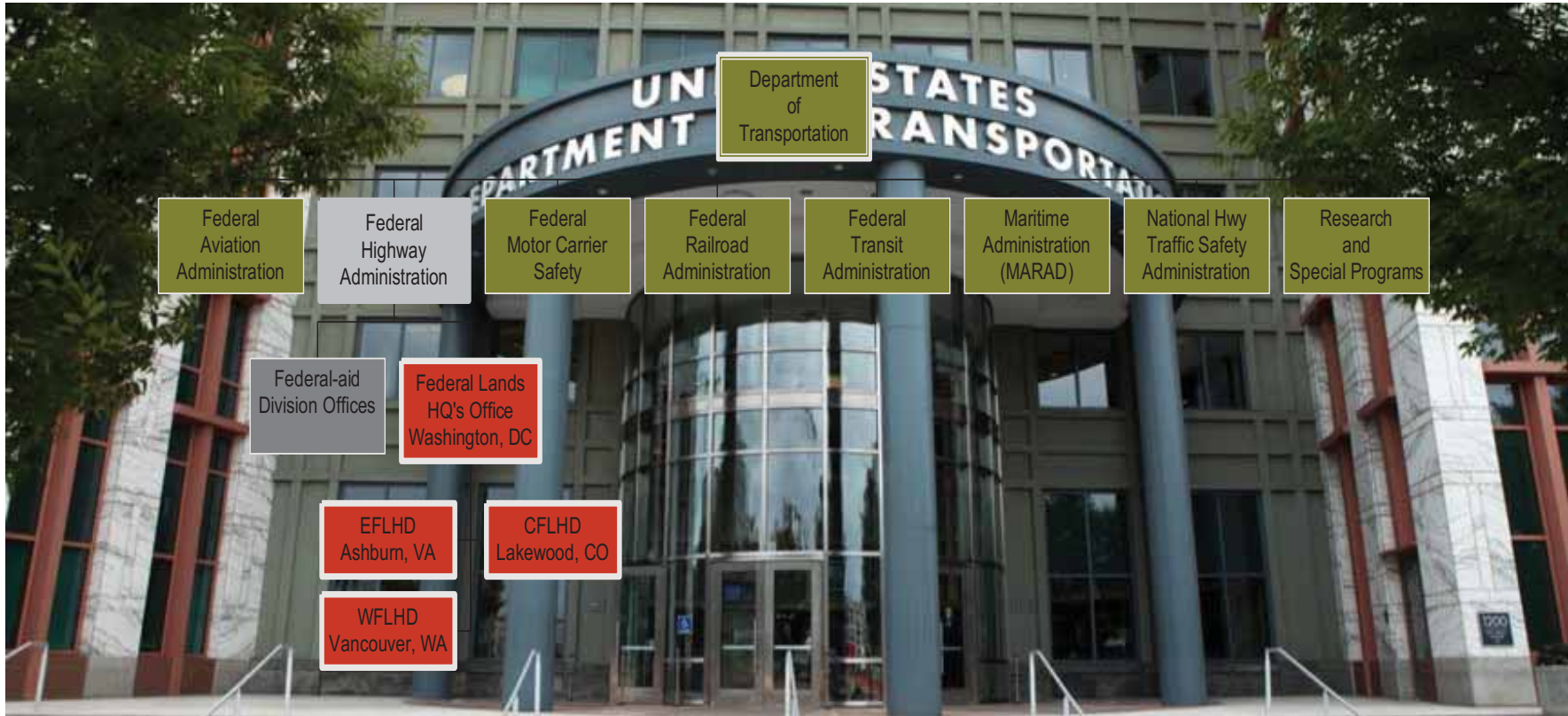


# Eastern Federal Lands Highway Division (EFLHD)

Presented By: Monique Evans, Division Director

ASHE Potomac Dinner Meeting

June 8, 2022



USDOT – FHWA – FLH – EFLHD



EFL Division Office Ashburn, VA

# Eastern Federal Lands Highway Division (EFLHD)





**EFLHD Offices:**

New office in Ashburn, VA  
 Warehouse -- Sterling, VA

Regional Project Offices (RPO):  
 Sevierville, TN  
 San Juan, PR  
 Tupelo, MS

31 States, DC + territories PR & USVI

# EFLHD and RPO Structure



**US Army Corps  
of Engineers®**



**Federal Partner Agencies**

**Partners**



Federally recognized Indian tribal governments

State DOTs

Local Governments (Cities/Counties)

U.S. Virgin Islands

District of Columbia

Private Entities (for example CSX)

Other Federal Agencies

## Other Partner Agencies



- Program Administration and Project Delivery
- Emergency Response
- Transportation Planning
- Highway Design
- Contract Procurement
- Construction Management
- Environmental Compliance
- Road Inventory
- Bridge Inventory
- Asset Management
  - Bridge and Pavement Management
- Innovation and Technology Deployment
- Training and Technical Support

## FLH Services Provided

# Our Niche

*flexible solutions suiting unique needs*

Aesthetic, Historic,  
Cultural, and  
Environmentally  
Sensitive Projects

Highly Visible,  
Politically Sensitive  
Projects with  
Security  
Requirements

Hands-On Project  
Delivery

Collaboration with  
Multiple Partners

Independent 3<sup>rd</sup>  
Party Facilitator with  
Decision Making  
Responsibility





Arlington Memorial Bridge, DC/Virginia



Natchez Trace Parkway, Tennessee



Foothills Parkway, Tennessee



## Grants

- 2016 FASTLANE - \$90M
- 2016 TIGER - \$10M
- 2019 NSFLTP - \$35.8M

# DOT Grant Programs

Signed into law on August 4, 2020.

Invests in National Parks and Public Lands by –

- Providing permanent, full funding for the Land and Water Conservation Fund (LWCF) at \$900M annually, and
- Establishing the “National Parks and Public Land Legacy Restoration Fund” at up to \$1.9B per FY for 5 FYs 2021-2025 (up to \$9.5B total), to fund Deferred Maintenance (DM) in infrastructure for 5 federal agencies:
  - National Park Service (NPS)
  - Forest Service (FS)
  - Bureau of Land Management (BLM)
  - Fish and Wildlife Service (FWS)
  - Bureau of Indian Education (BIE)

## Great American Outdoors Act (GAOA)

- 30 projects under FLH Delivery:
  - NPS: 19
  - FS: 7
  - BLM: 4
  - NPS focused on rehabilitation projects; FS on bridges; and BLM on reconstruction projects.
- Estimated projects amount: \$1,082,895,788
- 4 projects awarded
- FY23 and beyond program – under development

## FY21-22 GAOA Summary of FLH Delivery

4 FY21 GAOA projects awarded:

- NP-GWMP 1(3), 2(5)
- NP-FOOT 8G16 8H10
- NP-BLRI 2D17
- NB-BLRI 2B13 2H17ETC

5 GAOA projects under design for early  
2023 award:

- VA NP COLO 1A21 B42 C18 D51
- NP NATR 3N16 3H25 ETC
- NP BLRI 2M25 2N20
- NP BLRI 1L9 1M22 TN NP GRSM 10N(3) 19(1)107(1)

FY21-23 GAOA EFLHD Awards

- Once-in-a-generation investment in infrastructure
- Grows the economy, enhances U.S. competitiveness, creates good jobs, and makes the U.S. economy more sustainable, resilient, and equitable
- Around \$550 B in new Federal infrastructure investment, including—
  - Largest federal investment in public transit ever
  - Largest federal investment in passenger rail since the creation of Amtrak
  - Largest dedicated bridge investment since the construction of the Interstate System
  - Largest investment in clean drinking water & wastewater infrastructure in U.S. history
  - Largest investment in clean energy transmission & electric vehicle infrastructure in history
  - Ensuring every American has access to reliable high-speed internet
- On average, around 2 million jobs per year

## Bipartisan Infrastructure Law (BIL)

Goes Beyond Transportation



- **\$350.8 B (FY 22-26) for highway programs**
  - \$303.5 B in Contract Authority (CA) from the Highway Trust Fund (HTF)  
+\$47.3 B in advance appropriations from the General Fund (GF)
- **More than a dozen new highway programs**, including—
  - **Formula:** resilience, carbon reduction, bridges and electric vehicle (EV) charging infrastructure
  - **Discretionary:** bridges, EV charging infrastructure, rural projects, resilience, wildlife crossings, and reconnecting communities
- Focus on safety, bridges, climate change, resilience, and project delivery
- **More opportunities for local governments and other non-traditional entities** to access new funding
- \$90 B transfer (GF->HTF) to **keep the HTF Highway Account solvent for years**

## High Points of BIL Highway Provisions

Funds highway programs for five years (FY22-FY26)

\$160-200 Million Avg. FLHP Funds Allocations In A Year  
40-50 Construction Contracts Awarded Annually

	# projects / total construction dollars
FY14	38 / \$150.3 M
FY15	45 / \$92.5 M
FY16	37 / \$115.5M
FY17	31 / \$130.1M
FY18	49 / \$344.2M
FY19	40 / \$93.1M
FY20	38 / \$114.8M
FY21	48 / \$296M

Natchez Trace Parkway Bridge over Duck River, Tennessee

## EFLHD Program Size - Historic

FY22 Program – plan to deliver **59** project awards in FY22 for a total construction dollar amount of **\$785.7M**.



Natchez Trace Parkway Bridge over Duck River, Tennessee

EFLHD Program Size – FY22 Plan



Foothills Parkway, Great Smoky Mountains National Park, Tennessee

## Recently Completed Project

Foothills Parkway Sections 8E & F, Walland to Wears Valley





I- 564 Intermodal Connector, Virginia

# Recently Completed Project

I-564 Intermodal Connector





Arlington Memorial Bridge, VA/DC Before/After

# Recently Completed Project

Arlington Memorial Bridge



# Recently Completed Project

Fort Meade Rockenbach Access Control Point



Route 1, Fairfax County Parkway, Virginia

# Recently Completed Project

Route 1





## Recently Completed Project

Veterans Drive, St. Thomas, US Virgin Islands



# Current Project

Fort Eustis Boulevard Bridge, VA-105, Virginia





# Current Project

Natchez Trace Parkway – Alabama and Mississippi



# Current Project

Kennedy Center Ped/Bicycle Trail & Rehabilitation of Rock Creek & Potomac Parkway, DC





PR ST ER PRMNT RPR PR #1  
Guardrail #453 Km 115.8  
Mar 26, 2021 at 11:11:24 AM

N 18° 26' 16" W 66° 5' 41"  
PR San Juan, Puerto Nuevo  
PR ST ER PRMNT RPR PR-2 Unit-1

# Current Project

Puerto Rico PR ER PRMNT (5) & (6)



# Current Project

George Washington Memorial Parkway (GWMP) North





# Current Project

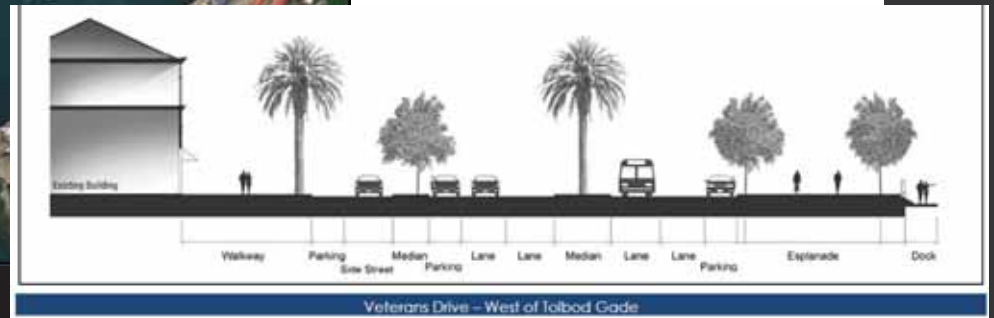
Arlington National Cemetery – Defense Access Road, Arlington, VA





# Upcoming Project

Rehabilitation of Colonial Parkway, Segments A, D, E and F - Virginia



# Upcoming Project

Veterans Drive Phase II





# Upcoming Project

PR-10 Landside Repairs – Utuado, PR



# Upcoming Project

NASA Wallops Island, Virginia



# Support for Upcoming Work

Construction IDIQ with a Design/Build Option?





# Future Projects of Interest

Foothills Parkway – Completion



## Future Projects of Interest

Replacement of Bourne and Sagamore Bridges, Cape Cod, MS



