



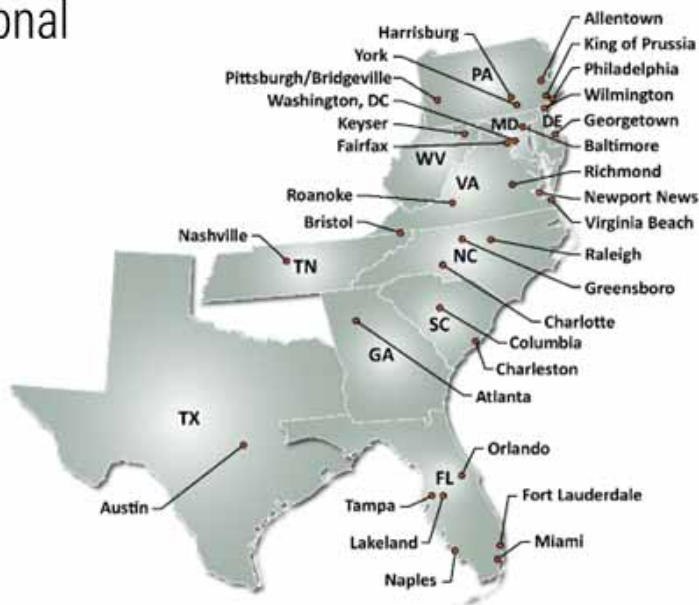
Committed to assisting our clients build
healthy, vibrant, and connected communities

Presenters: John McDowell, PE, F.ASCE and Kush Vashee, PE



CELEBRATING 100 YEARS!

- Founded in 1923 – Baltimore, MD
- 100 years of growth through client focused delivery of professional services
- Growing National Presence



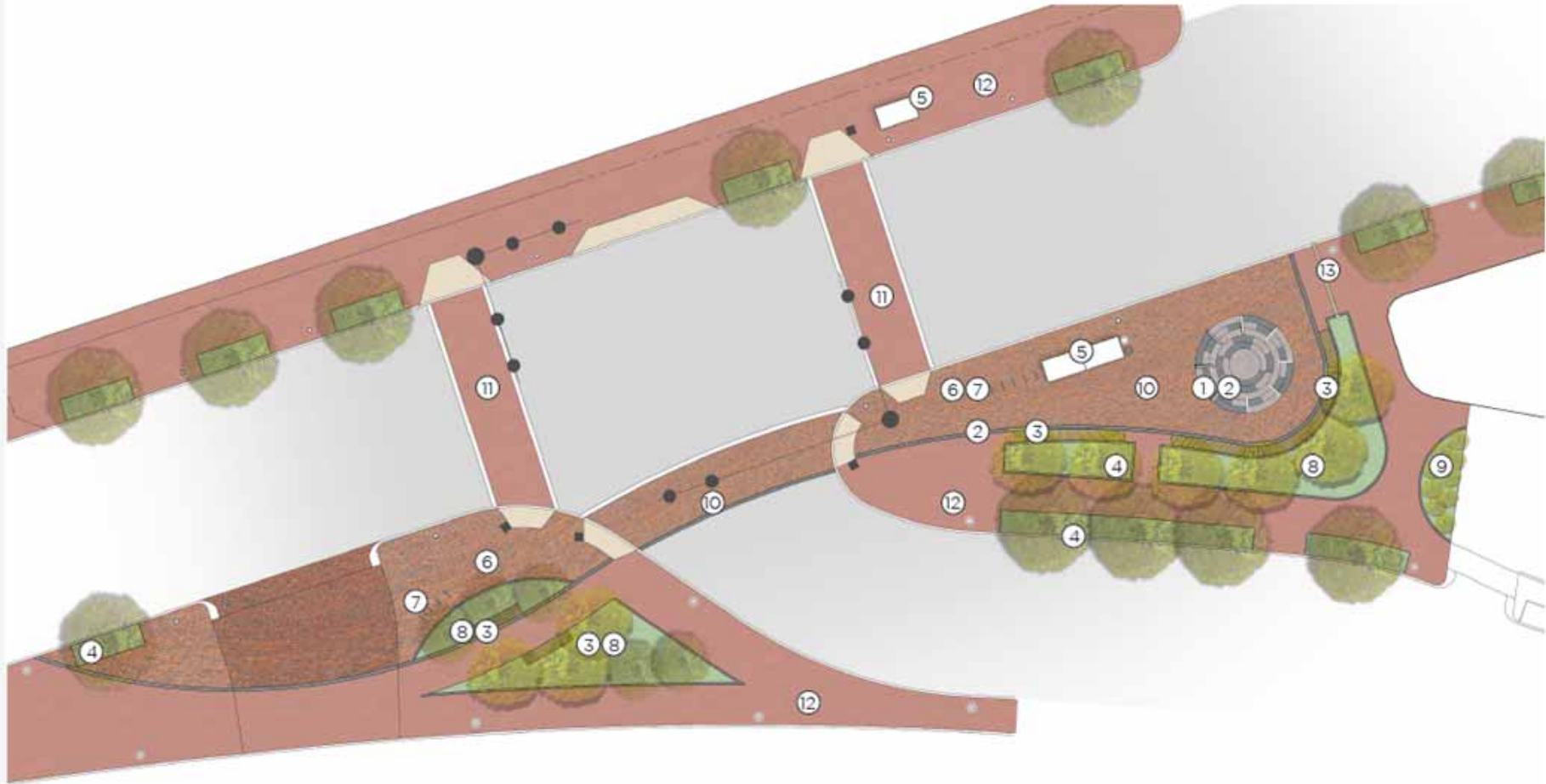
Evolving Traditional Design

SOUTH WASHINGTON STREET TRANSIT PLAZA



- History of Falls Church
- Low impact design
- Multimodal design
- Accessibility





Legend

- ① Interpretive Signage/Public Art
- ② Interpretive Pavement
- ③ Wood Bench/Integrated Lighting

- ④ Flush Planter w/Shade Tree
- ⑤ Bus Shelter
- ⑥ Curvilinear Boardwalk Paver

- ⑦ Bike Rack
- ⑧ Rain Garden
- ⑨ Planting to Screen Taxi Co. Parking

- ⑩ Curvilinear Boardwalk Paver Crosswalk with Granite band (12' width)
- ⑪ City Standard brick paver at Crosswalk (12' width)
- ⑫ City Standard brick paver
- ⑬ Runnel

CONCEPT TO FINAL DESIGN



Evolving Traditional Design

RICHMOND HIGHWAY BRT



- Designing for all users
- Two-way cycle tracks
- Pedestrian plazas
- Accessible transit stations

INTERSECTION RENDERING



STATION RENDERING



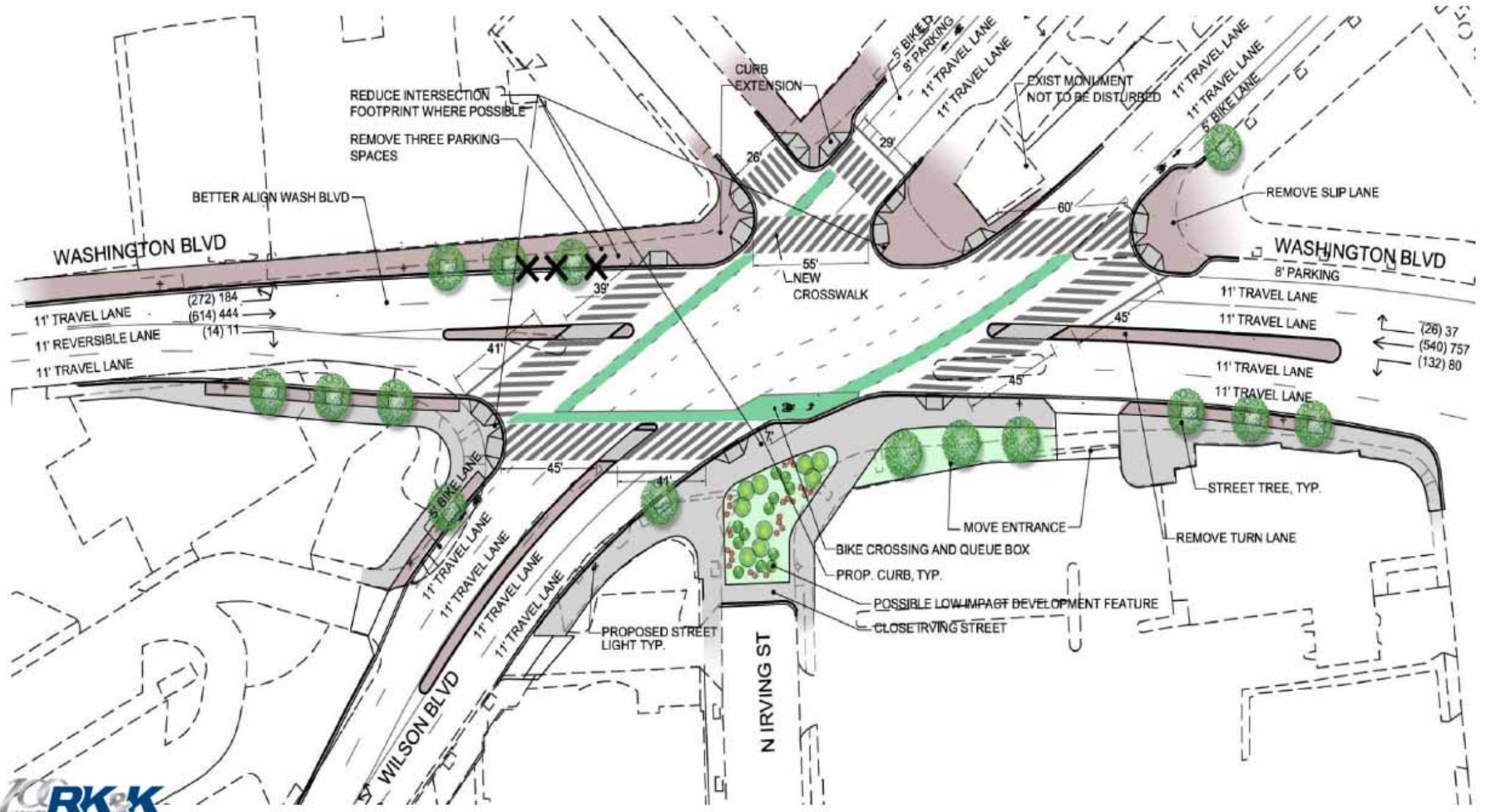
Evolving Traditional Design

CLARENDON CIRCLE IMPROVEMENTS



- Designing for all users
- Separated bike/pedestrian crossings
- Intersection re-alignment
- Safety improvements
- Simplified intersection configuration







Healthy Communities
**26TH STREET GREEN
PROJECT**



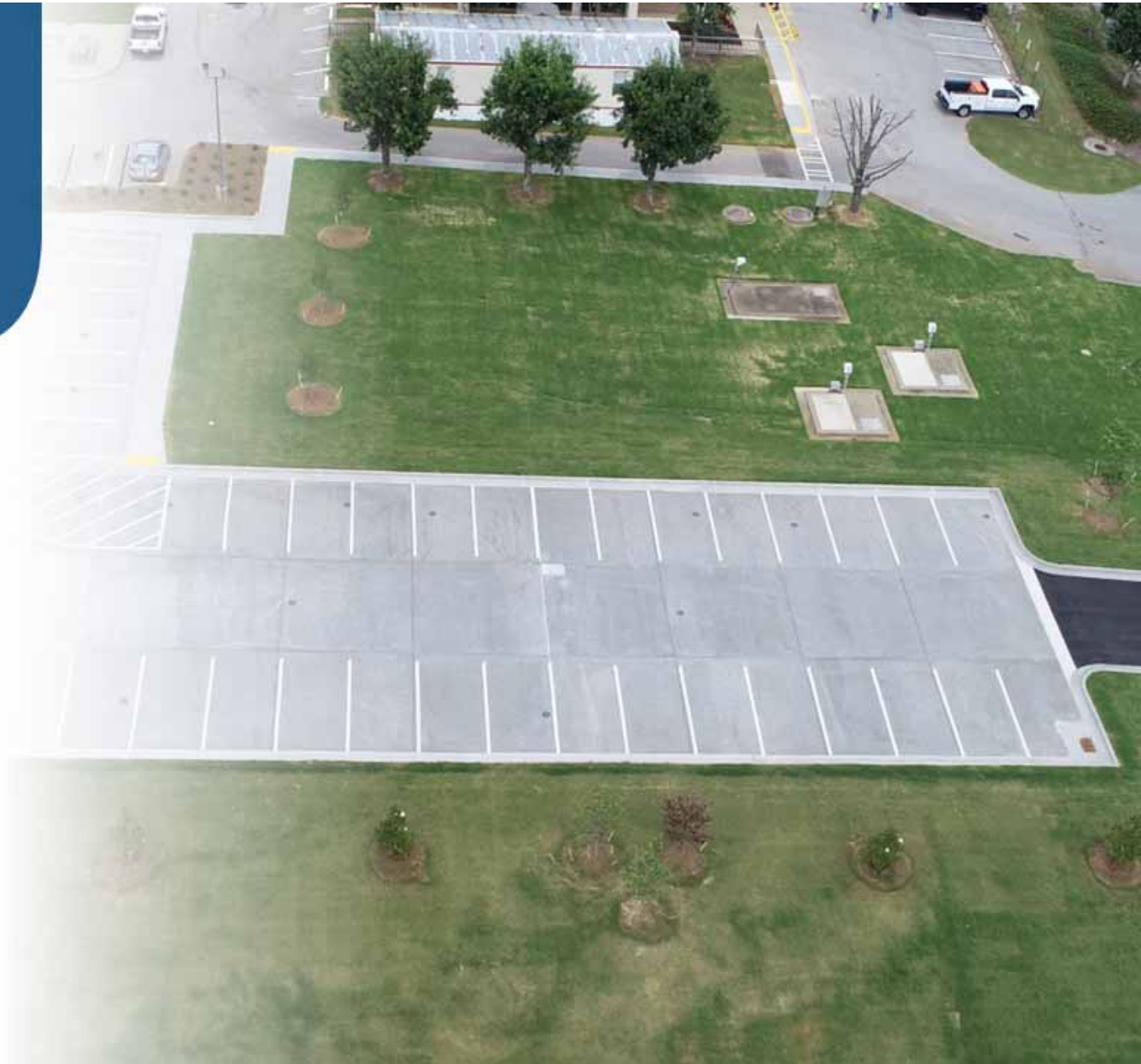
- Urban park design
- Placemaking
- Consensus design
- Traffic calming for nearby school

Sustainability Focus

F. WAYNE HILL WATER RESOURCES CENTER



- Water quality and quantity for 100-year storm
- Reduce storm runoff
- Sustainable design



PREVIOUS PARKING LOT DEMONSTRATION



ARKK

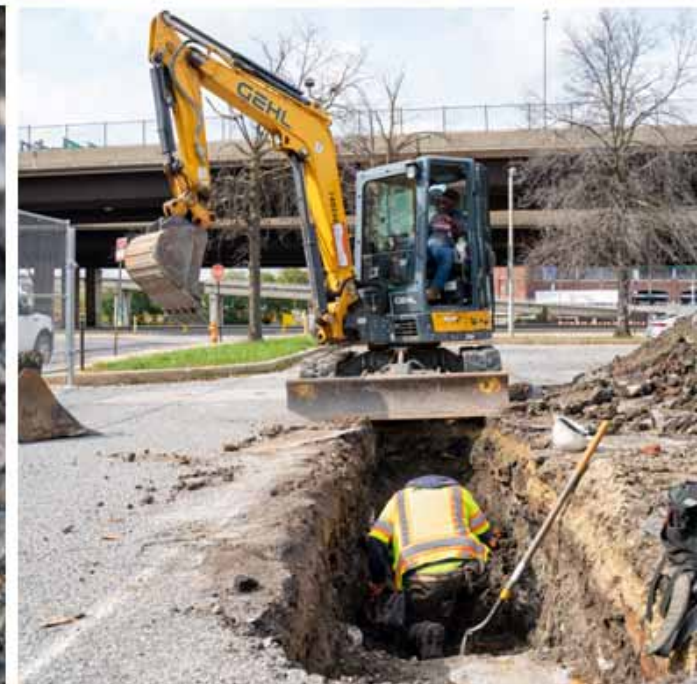


Environmental Stewardship SOLO GIBBS PARK



- Historic district
- Archaeological Investigation
- Detailed excavation plan
- 16 targeted trenches
- Historic preservation

ARCHAEOLOGICAL DIGS AND ARTIFACTS



RK&K creates communities that are:



HEALTHY



VIBRANT



CONNECTED



Thank you!

