

# George Washington Memorial Parkway *North Section Rehabilitation*

Project No. NP-GWMP 1(3), 2(5)



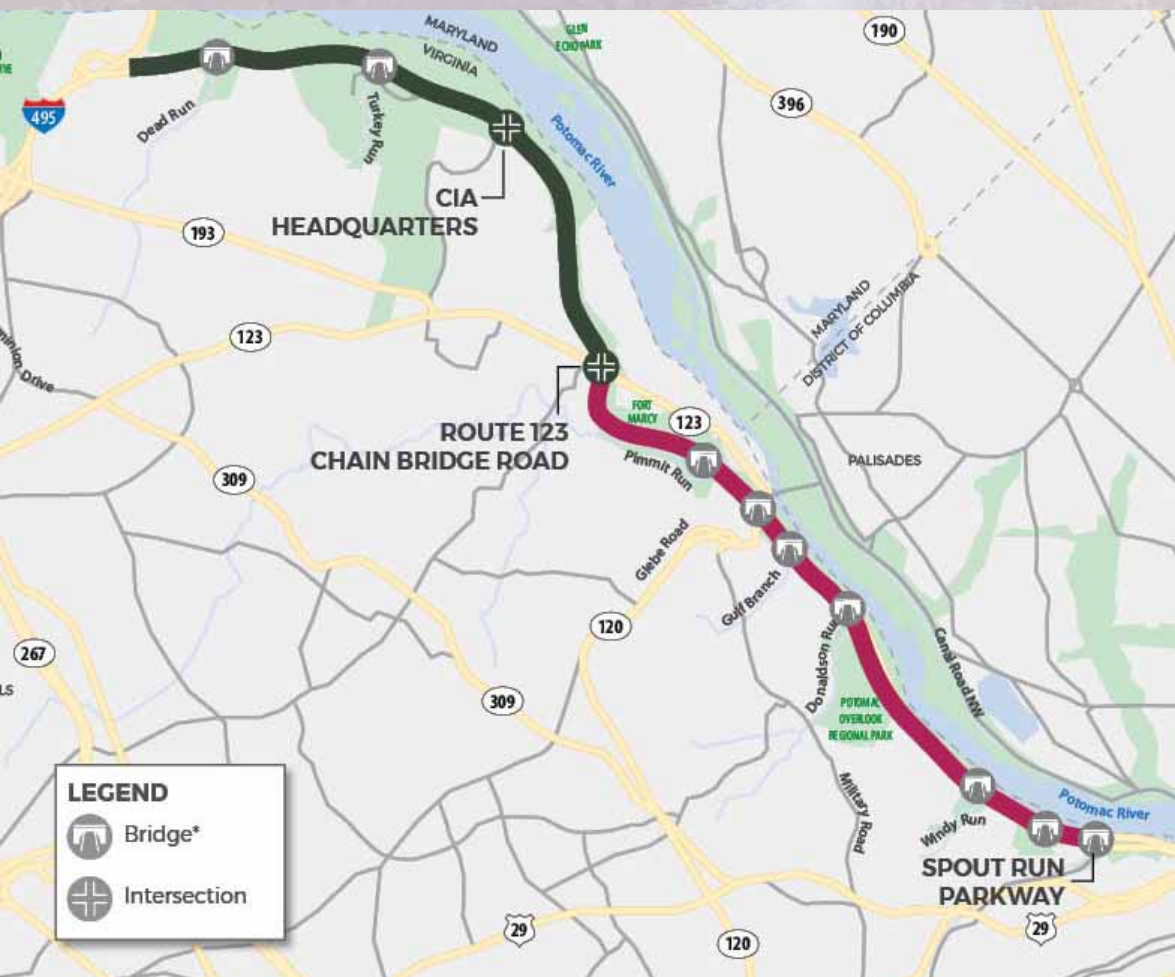
# Agenda

- Project Team & Project Overview
- Design Approach
- Permitting and Environmental Compliance
- Historic Preservation Approach (understanding, viewsheds, guardwalls)
- Outfall Rehabilitation
- Closing

# Team Organization



# Rehabilitation Project Overview



- Four-lane scenic historic parkway
- Approximately 7.6 miles of the roadway between Spout Run to Interstate 495/Capital Beltway
- Fairfax and Arlington Counties
- 128 water drainage outlets along the project corridor
- 10 bridges spanning waterways or existing

# Rehabilitation Project Overview



**Replace asphalt pavement**



**Lengthen entrance/exit lanes at some interchanges**



**Modify the  
Route 123 interchange**



**Reconstruct and repair  
stone walls and roadside  
barriers**



**Replace and repair  
drainage systems**



**Rehabilitate historic  
overlooks and re-open  
historic parkway views**

# National Significance of Project

- National Register of Historic Places (1995)
- Commemorates George Washington, engineering, and landscape architecture
- Scenic, critical transportation link
- Striking the balance
- This team needs to get this right

*This rehabilitation project, on a facility of historic and engineering significance, will be executed to provide a long-term solution that improves the visitor and user experience. Fort Myer will apply a park-focused approach and lessons learned from their “Excellence in Construction” award-winning Beach Drive Reconstruction Project.*



# Design Approach



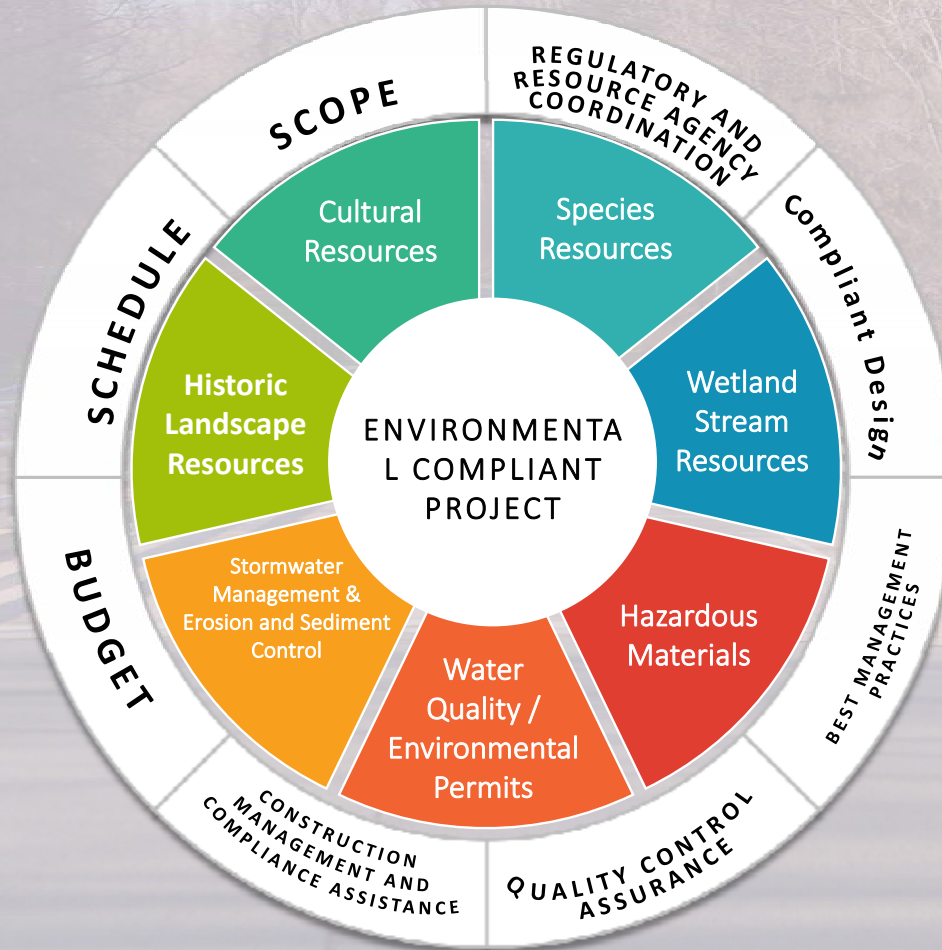
## Mission:

- "Lying Lightly on the Land"

## Core Values:

- Commitment to Quality
- Safety and Environmental Stewardship
- Integrated Design-Build Approach

# Environmentally-Compliant Project





# Preserve and Protect *Historic Landscape Character-defining Features*

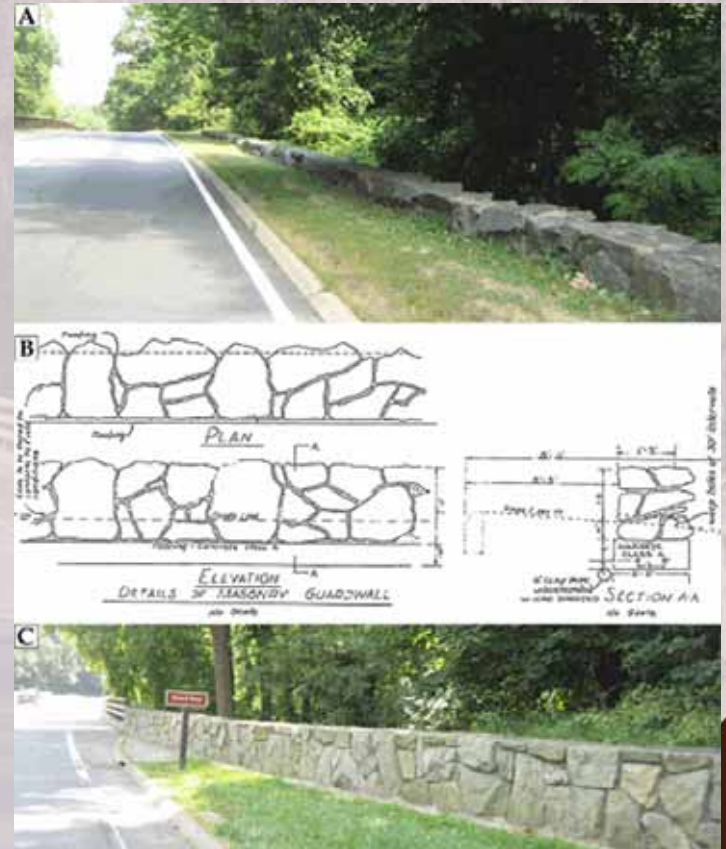
- Bringing cultural landscape preservation expertise to construction team processes
- Role in design and construction phases
- Landscape character-defining features to protect:
  - Views over Potomac palisades and river
  - Views to Washington, DC core
  - Rolling topography and road alignment to enhance views
  - Grass medians between north and southbound lanes
  - Stone guardwalls at edges with views over
  - Designed historic plantings
  - Enclosing hardwood forests and deep ravines
- Team is focused on protecting cultural landscape, archaeological sites, trees, woodlands, and native community from construction damage



Images from GW Memorial  
Parkway Environmental  
Assessment

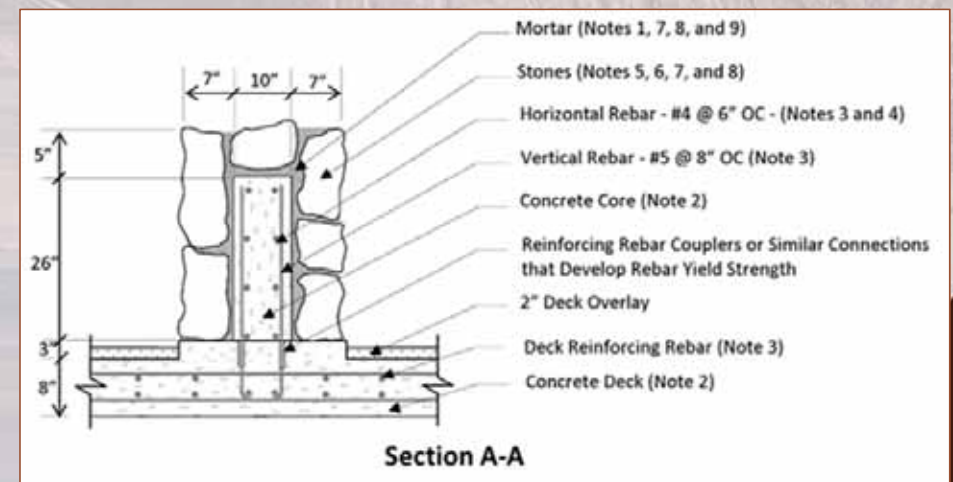
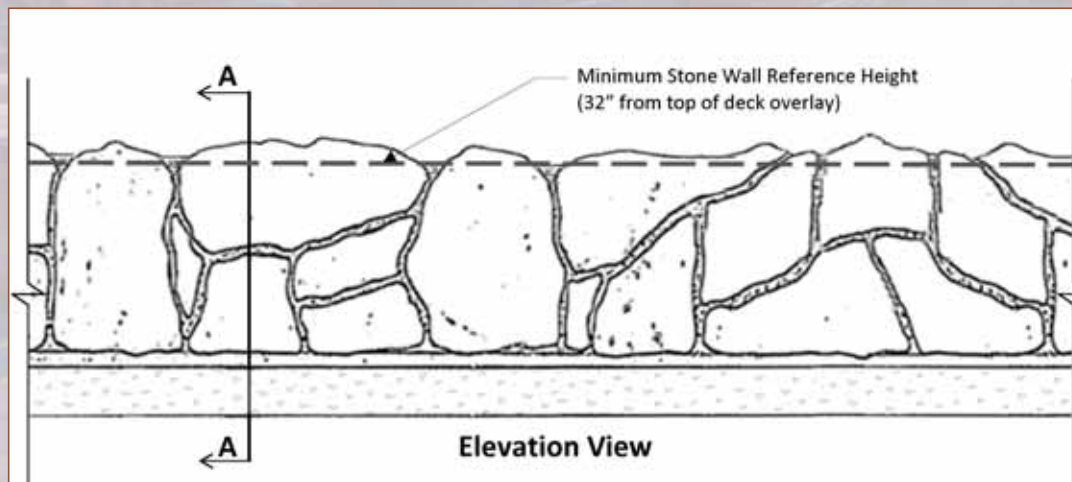
# Preserve, Protect, and Rehabilitate *Historic Designed Landscape Features*

- Rehabilitate parkway to improve function and safety
- Protect, repair, or rehabilitate contributing features
- Address paving, outfalls, bridges, stone guardwalls, etc.
- Apply historic preservation best practices to ensure quality results



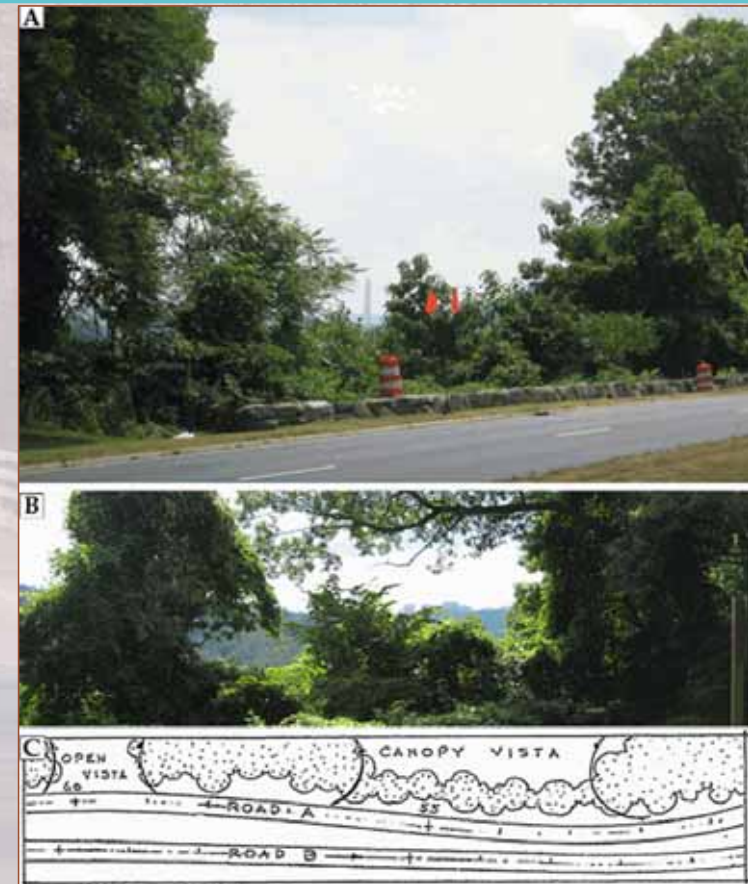
# Preserve, Protect, and Rehabilitate *Stone Guardwalls*

- Preliminary Assessment completed for EA by EFLHD and NPS
  - Retain and Repair
  - Reconstruct with Concrete Core Wall
  - Existing Wall to remain w/countermeasures



# Preserve, Protect, and Rehabilitate *Historic Views*

- Identify and protect remaining historic vistas, northbound and southbound
- Rehabilitate unmaintained viewsheds that coincide with outfall work
- Coordinate cultural landscape, archaeology, and natural resource protection



Images: NPS Cultural Landscape Inventory p122

# Outfall Rehabilitation Construction Access Approach

## Limit Amount of Land Disturbance

- Identify 6 – 15' access corridors in coordination with NPS
- Construction plans / documents (preliminary, intermediate, final) coordinated with NPS and EFLHD
  - Environmental constraints mapping including no impact zones
    - Eastern Buttercup survey
    - Tree inventory within LOD with certified arborist oversight
    - Cultural resource APE and un-surveyed APE areas
  - Potential impacts associated with one access LOD weighed against potential impacts if access is relocated
- Natural resources protected with high visibility fencing; BMPs to reduce soil compaction; construction barrier fencing along access perimeter



# Closing

- Solid understanding of project goals and EFLHD/NPS expectations
- Vested team committed to this nationally historic project's success
- Project specific approach from design through construction
- Complementary team strengths anchored by EFLHD/NPS experience
- Ability to mitigate project risks by partnering with EFLHD/NPS
- Local park specific stone masonry and resource protection experience



# George Washington Memorial Parkway *North Section Rehabilitation*

Project No. NP-GWMP 1(3), 2(5)



Questions?

