

Virginia Passenger Rail Authority

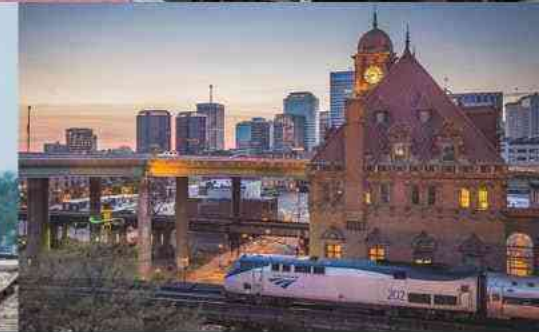
Infrastructure Program, Current Projects,
and Upcoming Opportunities

ASHE Potomac Section

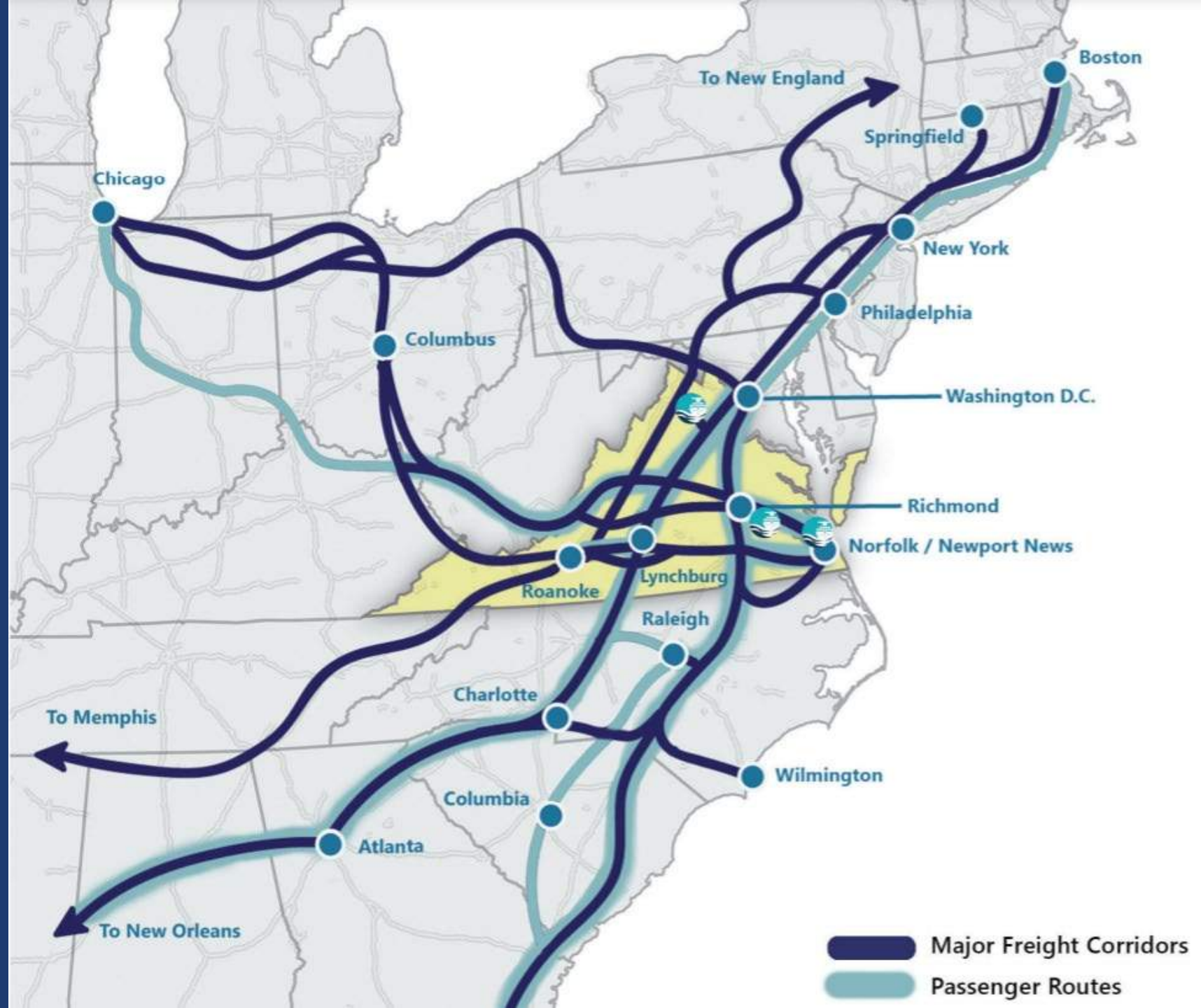
Geoff Pelletier, PE, PMP, CCM

Senior Director of Projects

November 7, 2023



Virginia: Rail Epicenter of the East



Virginia Passenger Rail Network: 2023

Existing VA Passenger Rail Network a result of dedicated, bipartisan funding since 2006

PASSENGER ROUTES



Virginia State-Supported Services

- Washington-Roanoke (Route 46)
- Washington-Newport News (Route 47)
- Washington-Norfolk (Route 50)
- Washington-Richmond (Route 51)

Host Railroads

- CSX** - CSX Transportation
- NS** - Norfolk Southern
- BBRR** - Buckingham Branch
- Passenger Station

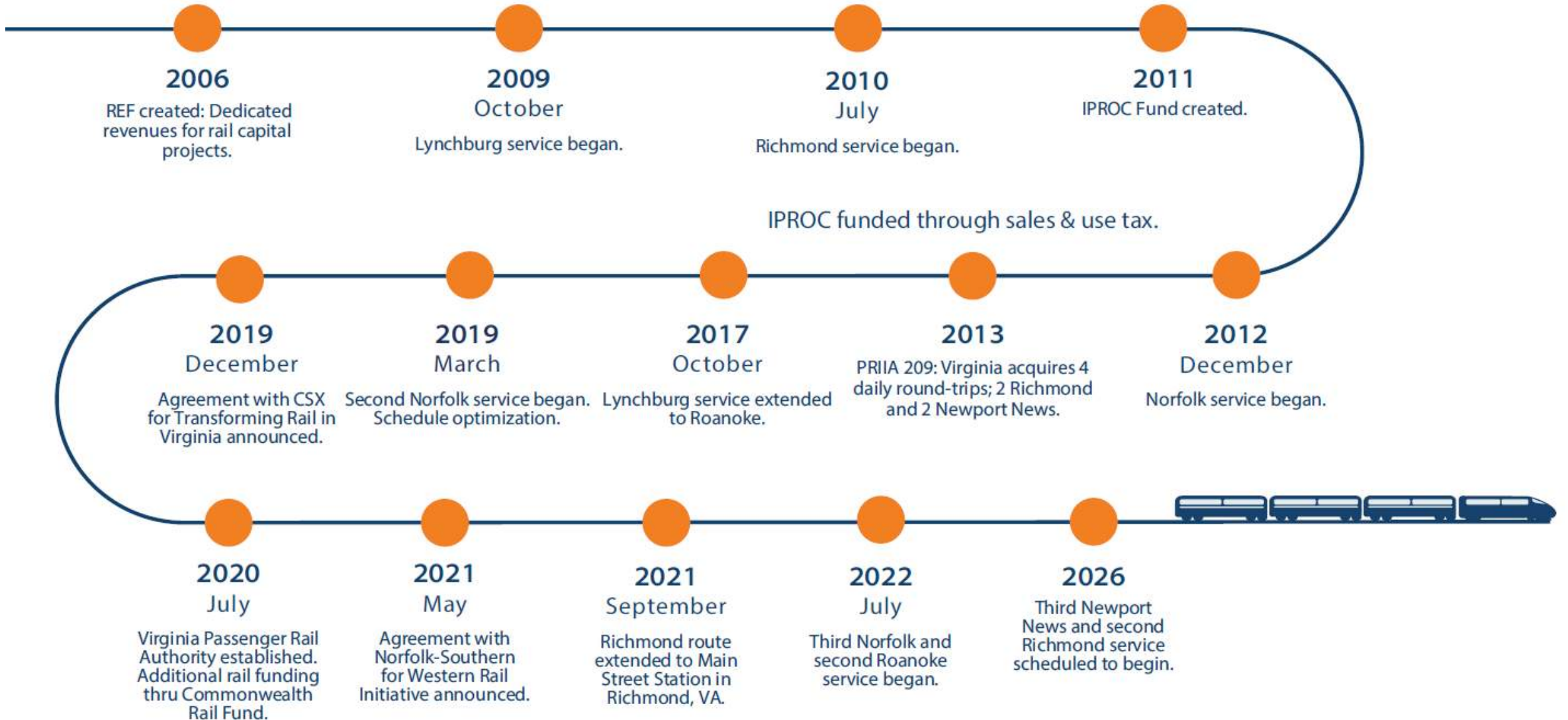
Other Services

- Other Amtrak State-Supported
- Amtrak Long-Distance
- VRE Commuter Rail
- - - Thruway Bus

- **Four State-Supported Amtrak Routes: 8 daily roundtrips**
 - Roanoke: 2
 - Richmond: 1
 - Newport News: 2
 - Norfolk: 3
- **Five Amtrak Long Distance Roundtrips**
- **One NC State-Supported Roundtrip**

- **Two Virginia Railway Express (VRE) Commuter Routes**
 - 16 daily roundtrips
 - Manassas: 8
 - Fredericksburg: 8

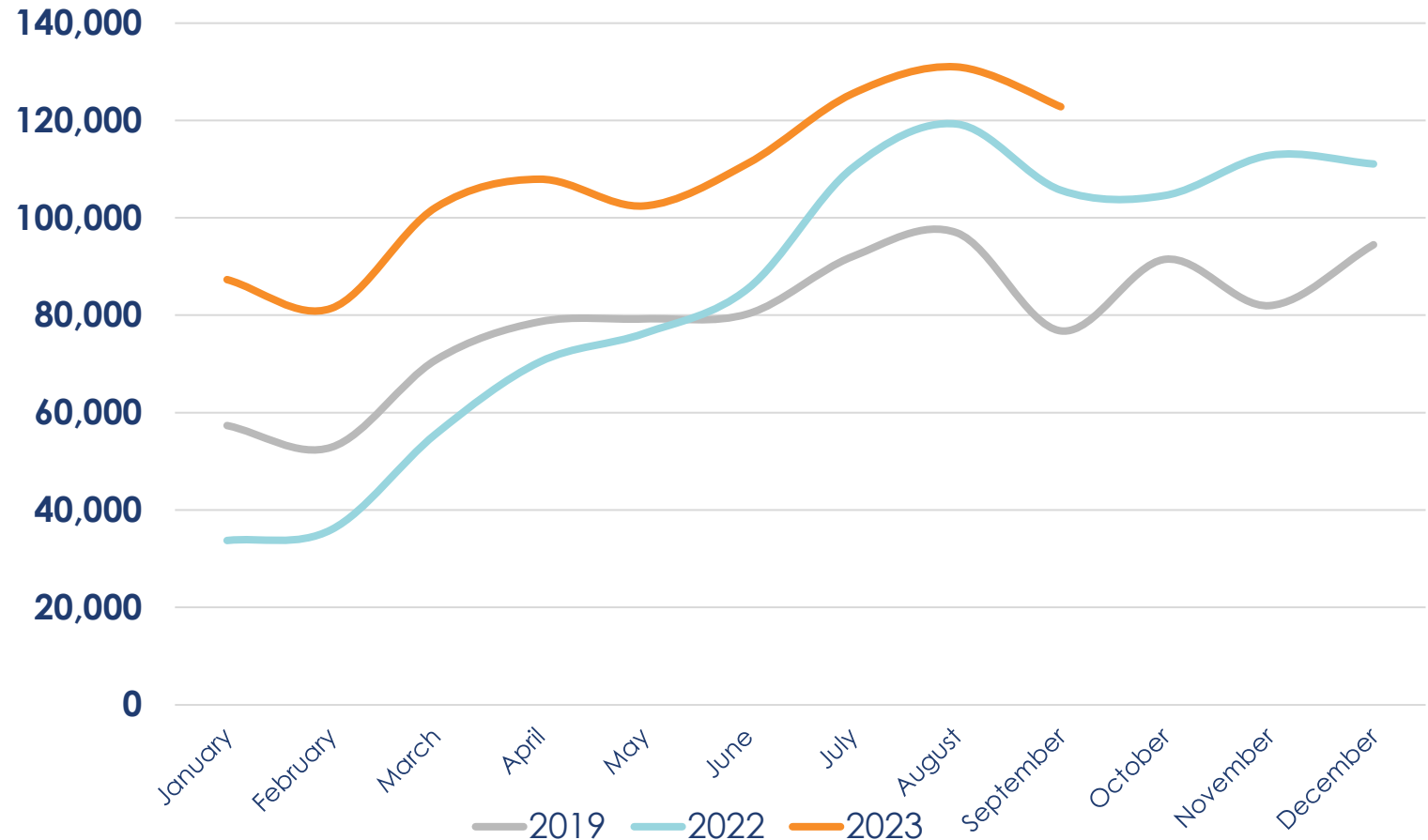
Commitment to Passenger Rail in Virginia



Virginia Supported Amtrak Ridership Setting Records

- In 2022, Virginia's state supported service set an all-time ridership record with 1,021,452 passengers, beating the previous high of 953,008 riders in 2019.
- 2023: 592,355 (January-June)
848,841 (January-August)
- In August 2023, our state-supported ridership had its biggest month ever, with 130,998 riders.

State-Supported Ridership by Calendar Year



Virginia Passenger Rail Authority

- Created in 2020 by the General Assembly
- Given all powers necessary for carrying out its statutory purposes:
 - Manage passenger rail in Virginia
 - Design, build, finance, and maintain rail facilities
 - Direct recipient of USDOT Grants
 - Eminent domain powers in Virginia
- Owns rail assets and right-of-way – independent AHJ
- Partners with Amtrak and VRE to operate passenger and commuter rail service
- Governed by a 15-Member Board, chaired by DRPT Director

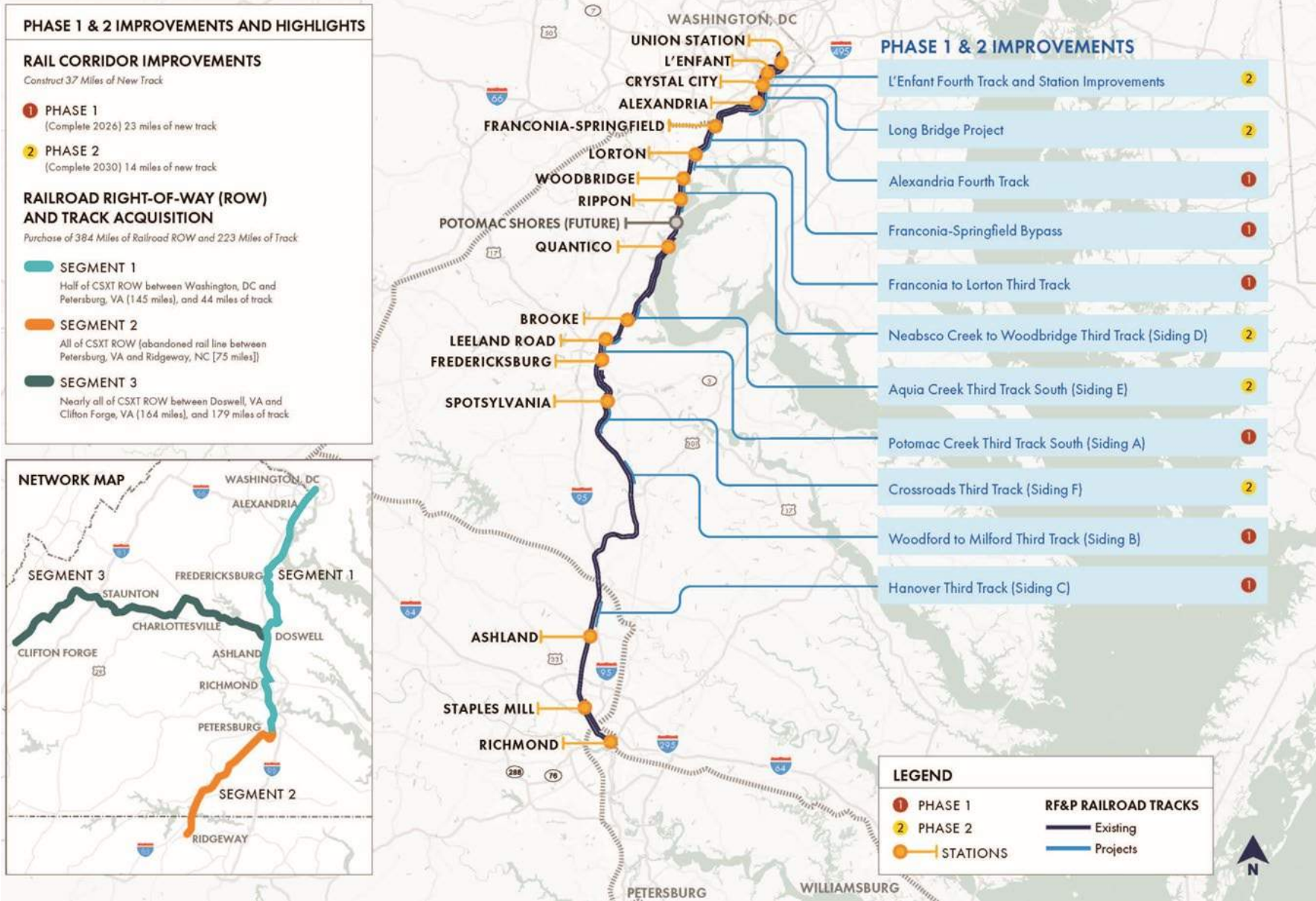


Transforming Rail in Virginia – Right-of-Way

- Purchasing half of the CSX DC to Petersburg ROW along I-95
- Buckingham Branch RR Doswell to Clifton Forge
- Abandoned CSX S-Line from Petersburg to N
- NS V-Line in NRV Roanoke to Christiansburg



Transforming Rail in Virginia: I-95 Corridor Projects



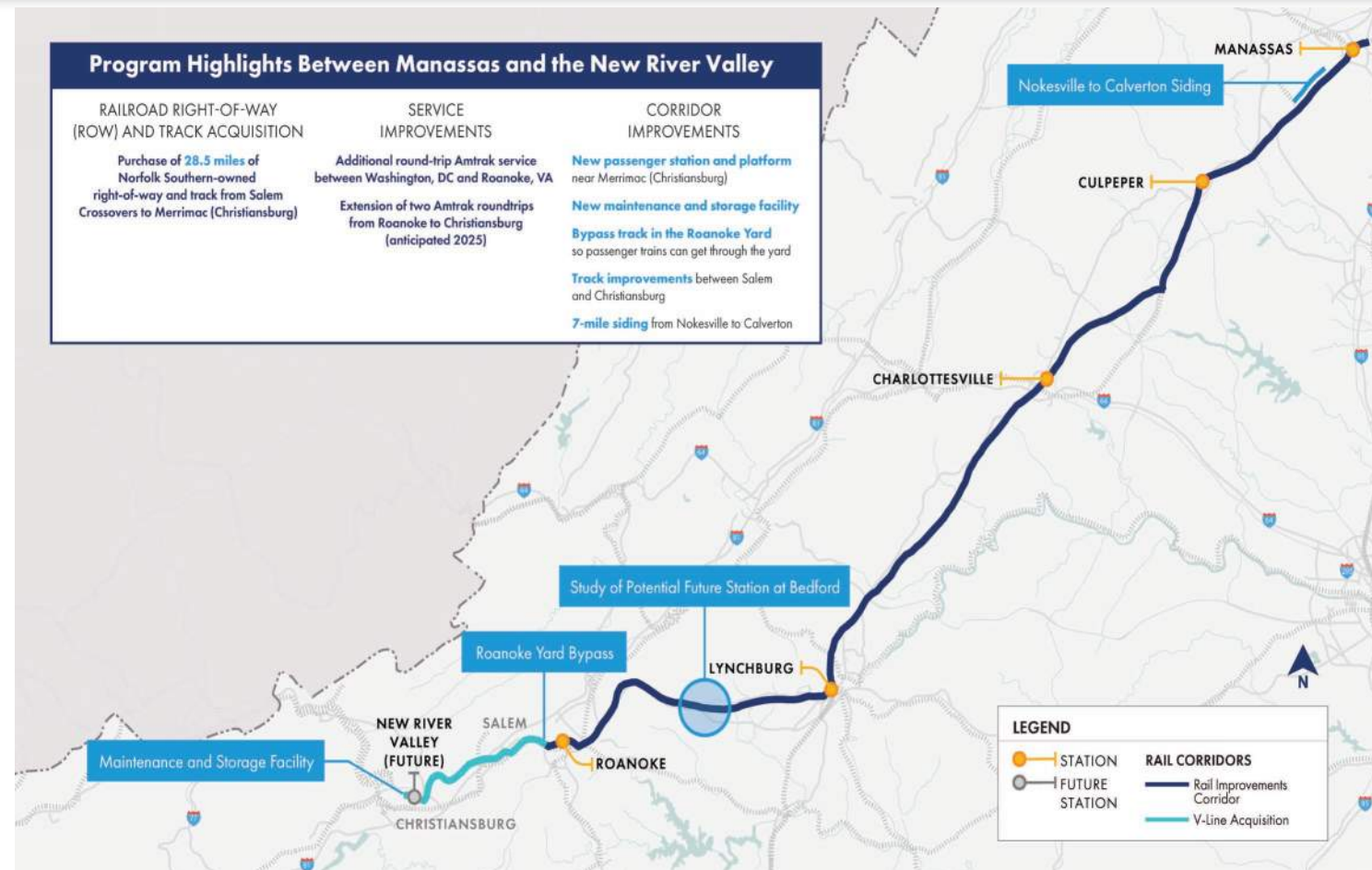
11 Phase 1 and Phase 2 projects between Washington, DC and Hanover County

Total Cost: \$4.3 B

Completion of each phase will unlock more passenger service.

Transforming Rail in Virginia: Western Rail Initiative

- 2nd daily roundtrip to Roanoke started July 11, 2022
 - 40% increase in ridership.
- Agreement with Norfolk Southern allowed for an extension to the New River Valley
- Preliminary engineering – new track, station, and other rail improvements in New River Valley.
- Norfolk Southern projects at Roanoke Yard and Nokesville to Calverton will improve on-time performance for passenger rail



After expansion to the New River Valley, an estimated 80,000 net new riders will be added to the Roanoke route through the agreement with Norfolk Southern.

DC to Charlotte Corridor – Richmond to Raleigh

- Connect Northeast Corridor to Southeast
- Three Segments
 - TRV Phases 1 & 2: DC to Petersburg
 - Richmond to Raleigh
 - Raleigh to Charlotte
- \$58M FRA grant for Preliminary Engineering – NCDOT, VPRA, & Amtrak
- NCDOT leading R2R project



Project Delivery Responsibility

Project	Design & Construction Lead
L'Enfant 4th Track & Station Improvements	VRE
Long Bridge North Package	VPRA
Long Bridge South Package	VPRA
Alexandria 4th Track	CSX
Franconia to Lorton 3rd Track	CSX
Franconia Bypass	VPRA
Richmond to DC Sidings - Phase 1	CSX
Richmond to DC Sidings - Phase 2	CSX
Richmond Layover Facility	VPRA
Ettrick Station	VPRA
Nokesville to Calverton	NS
Roanoke Yard	NS
Salem to Christiansburg Tunnel, Track, & Structures	VPRA
NRV Connecting Track and Station Platform	VPRA
S-Line / Richmond to Raleigh (Preliminary Engineering)	VPRA

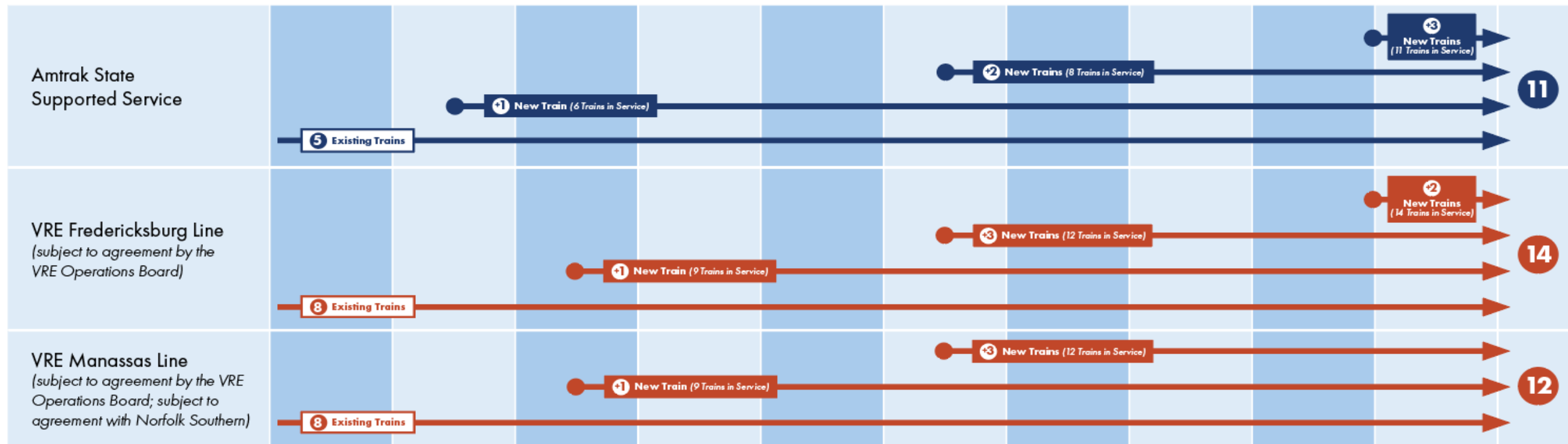


Future Service Expansion

Transforming Rail in Virginia: Passenger Rail Service Expansion

Planned Service Enhancements	2021	2022	2023	2024	2025	2026	2027	2028	2029	2030 and Beyond	Total Trains
------------------------------	------	------	------	------	------	------	------	------	------	-----------------	--------------

VA-Amtrak-CSX-VRE Partnership

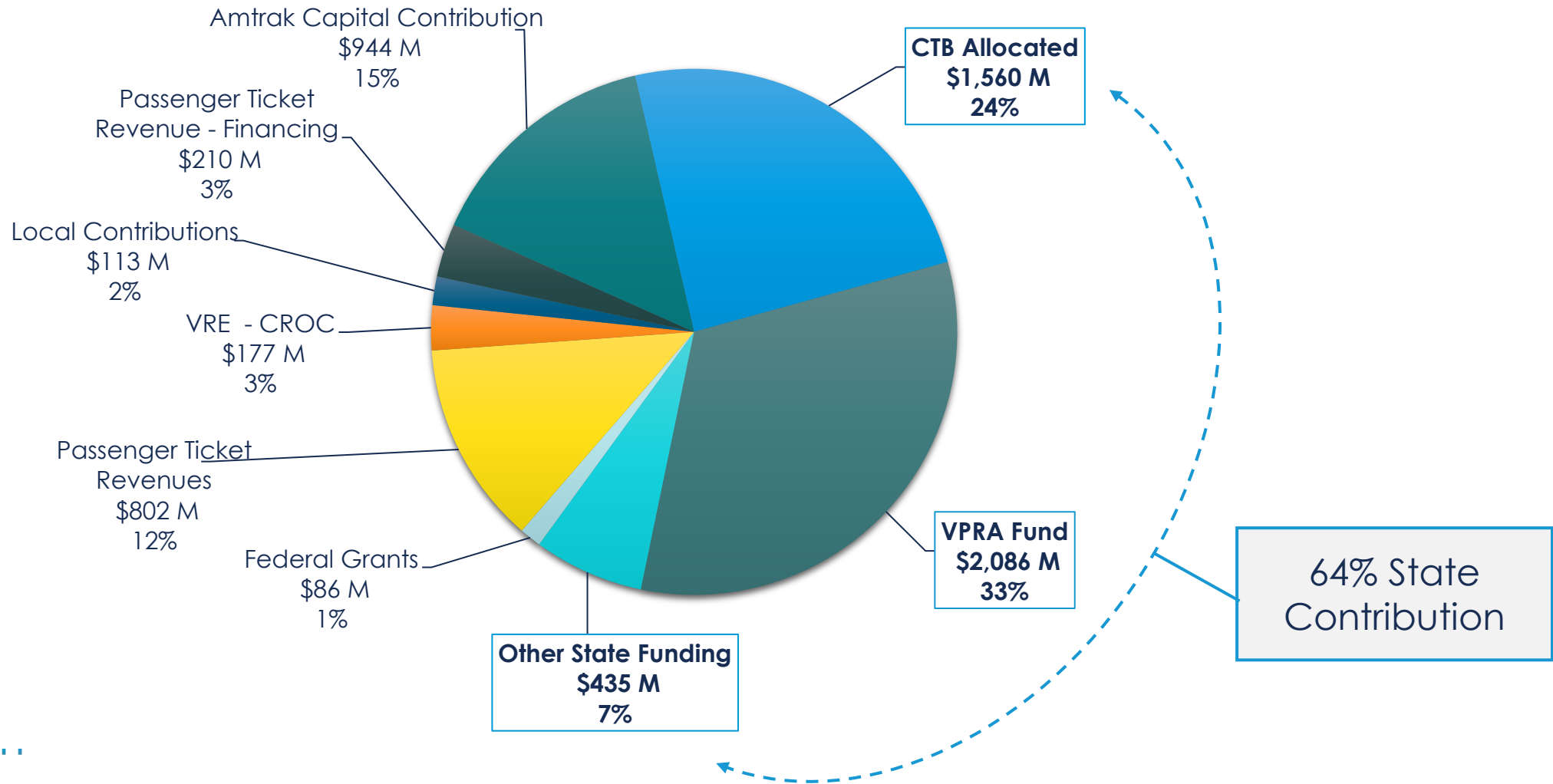


VA-Norfolk Southern Partnership



Funding Sources through FY31

VPRA funding by source
\$6.41B

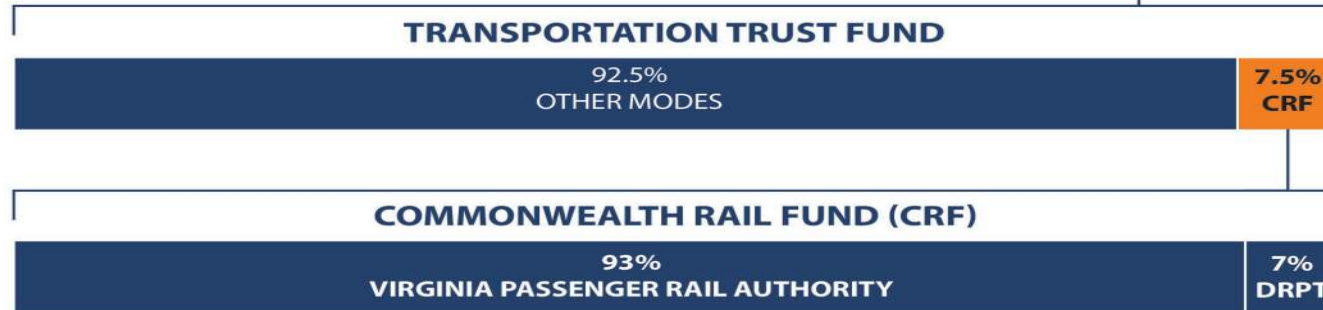
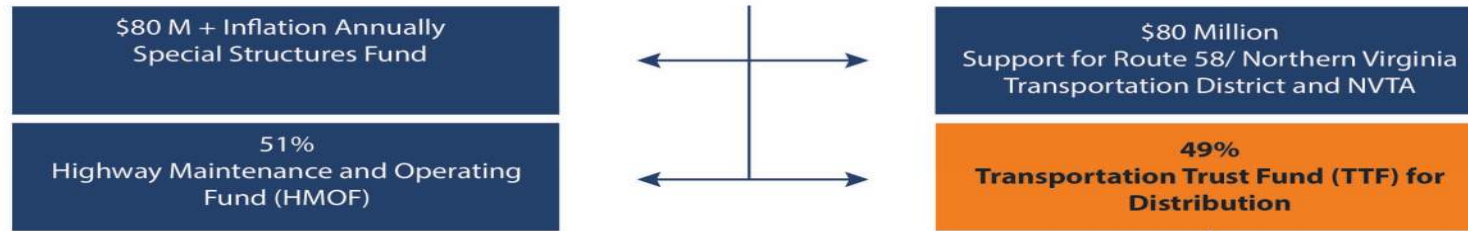


Commonwealth Transportation Funding Dedicated to VPRRA

MAJOR STATE REVENUES

International Registration Plan \$15 per trip	Motor Vehicle License Fees Base Car: \$20.75 CTF Share	Tax on Motor Fuels 26.2 cents/ gallon + CPI Gasoline 27 cents/ gallon + CPI Diesel	Highway Use Fee Fuel Economy	Motor Vehicle Sales and Use Tax 4.15%	Retail Sales and Use Tax 0.5% + 0.3% 0.1% GF Transfer	Recordation Taxes 3 of the 25 cents per \$100	Motor Vehicle Rental Tax 75% CTF 25% WMATA Capital Fund	Insurance Premium Taxes 1/3
--	--	--	---------------------------------	--	---	--	---	--------------------------------

COMMONWEALTH TRANSPORTATION FUND



<i>\$ in Millions</i>	FY23	FY24	FY25	FY26	FY27	FY28	FY29	FY30	Total
Commonwealth Rail Fund Allocation to VPRRA	184.4	158.4	165.3	168.3	171.4	174.3	176.9	181.4	1,380.4



Amtrak Airo Trains

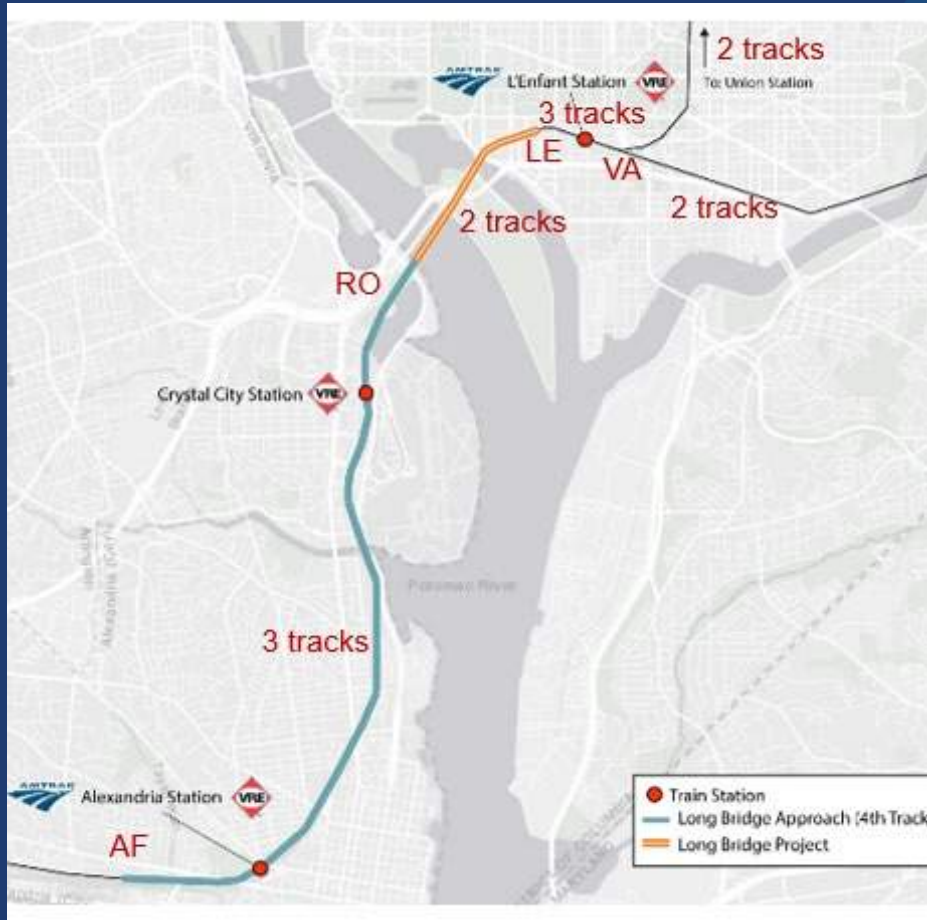
- Coming to Virginia and the Northeast Corridor by 2030
- Dual-Power trainsets
 - Can use electric or diesel power
 - Reduce dwell times at Union Station
- Push-pull trainsets
- Improve passenger experience
- Improve accessibility
- Reduce emissions





Current Project Highlights

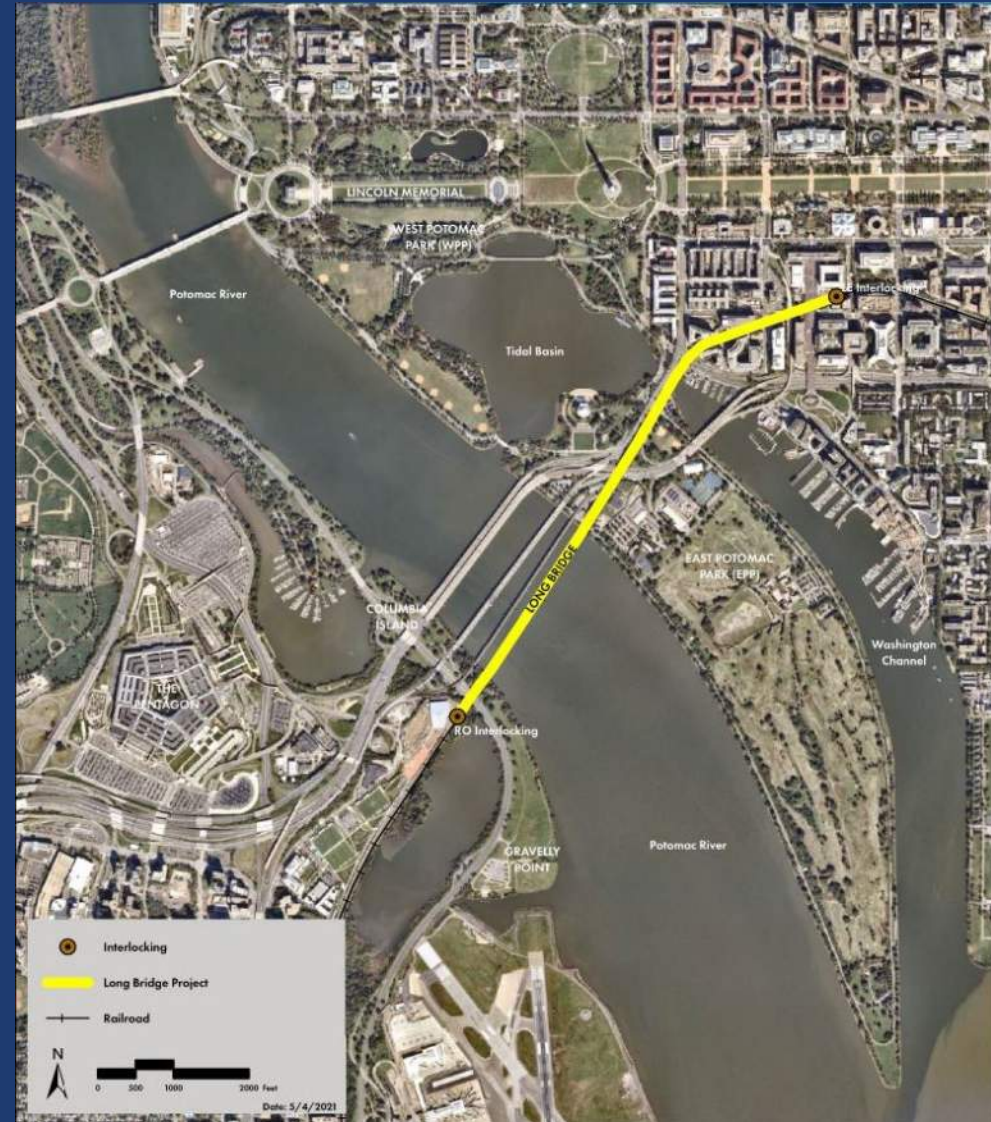
DC / Arlington / Alexandria Overview



← L'Enfant 4th Track (LE to VA) (2028) (3 to 4 tracks)

Long Bridge (RO to LE) (2030) (2 to 4 tracks) →

← Alexandria 4th Track (AF to RO) (2026) (3 to 4 tracks)



Long Bridge Project



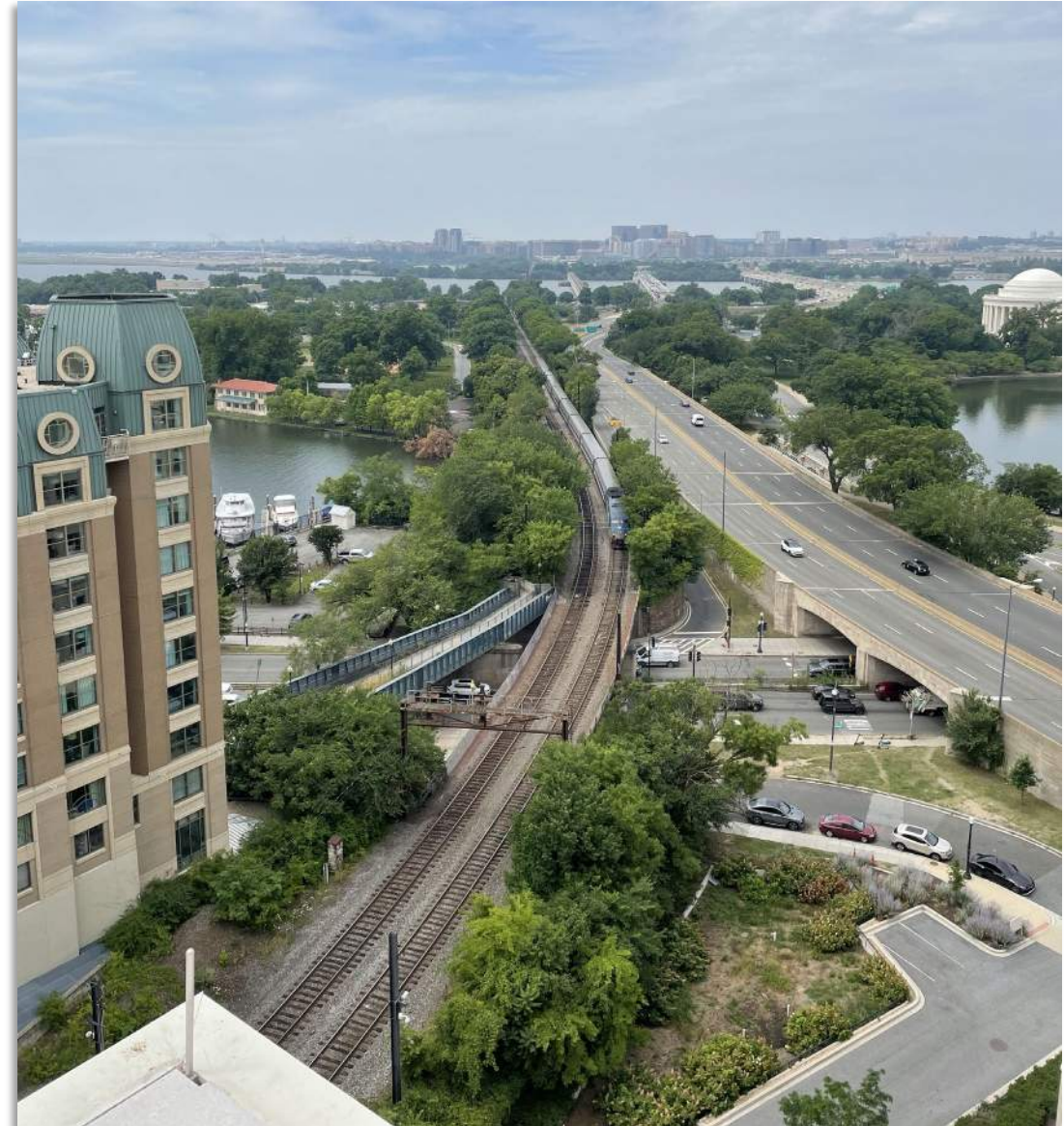
Focus Areas – RO Interlocking to LE Interlocking

1. RO interlocking to Mt. Vernon Trail
2. Potomac River Crossings
3. WMATA Tunnel Portal & I-395 Crossings
4. I-395 to Ohio Drive SW
5. Washington Channel to Maine Avenue
6. Maryland Avenue Overbuild to LE

Project Cost: \$2.2 B

Long Bridge Progress

- Test piles began first week of October
- Property acquisition, stakeholder coordination, and permitting ongoing
- Construction contract procurement
 - RFP for North package released in July
 - Design-Builder selection by end of 2023
 - Construction begins Fall 2024
 - RFQ for South package released in June
 - Shortlist/RFP early 2024
 - Design-Builder selection by Fall 2024
 - Construction begins in 2025



Alexandria Fourth Track

- New fourth track from south of Alexandria station to south side of the Potomac
 - Relieves a bottleneck in Alexandria where 5 tracks from Roanoke and Richmond routes merge into 3 tracks
- Close coordination with adjacent projects
 - Crystal City Station – VRE & Amtrak
 - King & Commonwealth Bridges – VPRA
 - Alexandria Station – VRE
 - King/Commonwealth Streetscape – City of ALX
- Utility relocation – CSX fiber duct bank relocation begins January 2023
- Final design expected by end of 2023
- Project cost: \$210 M



New Fourth Mainline Track (looking south)



Alexandria Station

The George Washington
Masonic National Memorial

Existing Rail Track

Main Line Boulevard

Nelson Avenue

King & Commonwealth Bridges

- Separate project from Alexandria Fourth Track
- Bridges located within the limits of the Alexandria Fourth Track Project
- Critical link in the rail corridor
- Frequent bridge strikes cause passenger and freight train delays
- Currently at 90% Design



King Street Bridge Replacement

- Replaces the existing structure built in 1905
- Increases vertical & horizontal clearance under the bridge
- Reduces maintenance and minimizes rail service interruptions
- Modernizes the bridge to current bridge standards
- Streetscape to be designed by the City



King Street looking east.



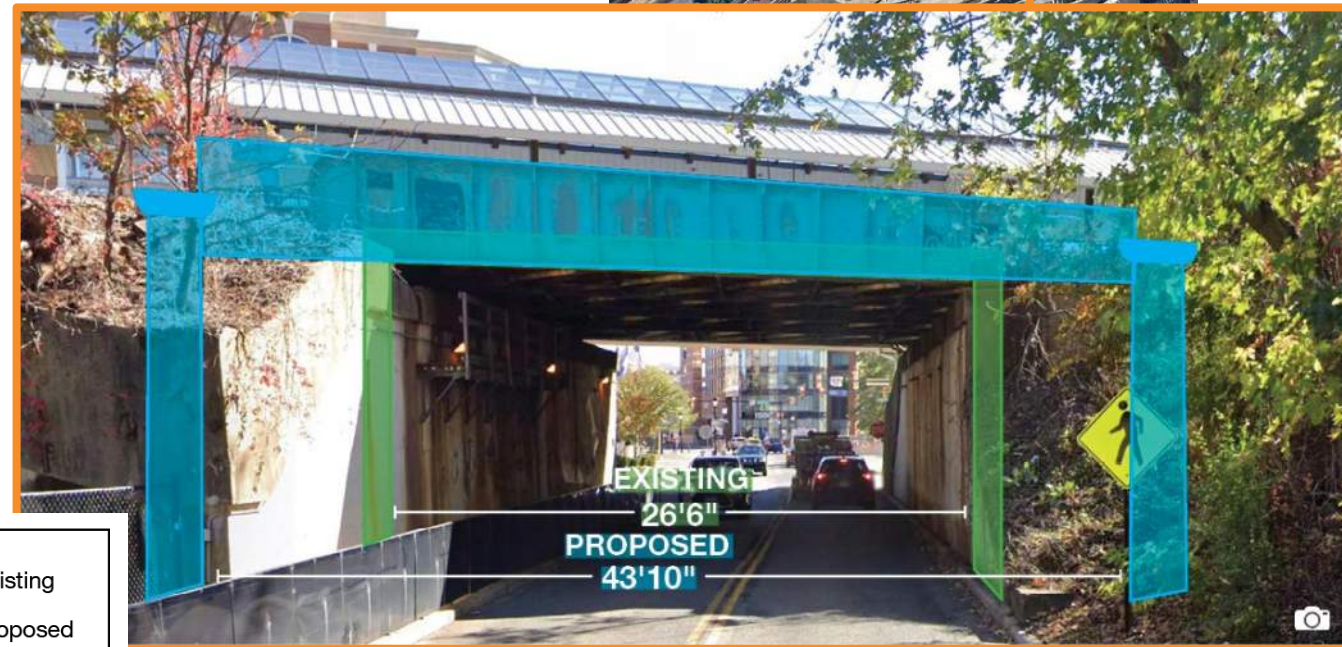
Dimensions based on 60% design plans, subject to change

Commonwealth Ave. Bridge Replacement

- Replaces the existing structure built in 1904
- Increases horizontal clearance under the bridge
- Reduces maintenance and minimizes rail service interruptions
- Modernizes the bridge to current bridge standards
- Streetscape to be designed by the City



Commonwealth Avenue looking east.

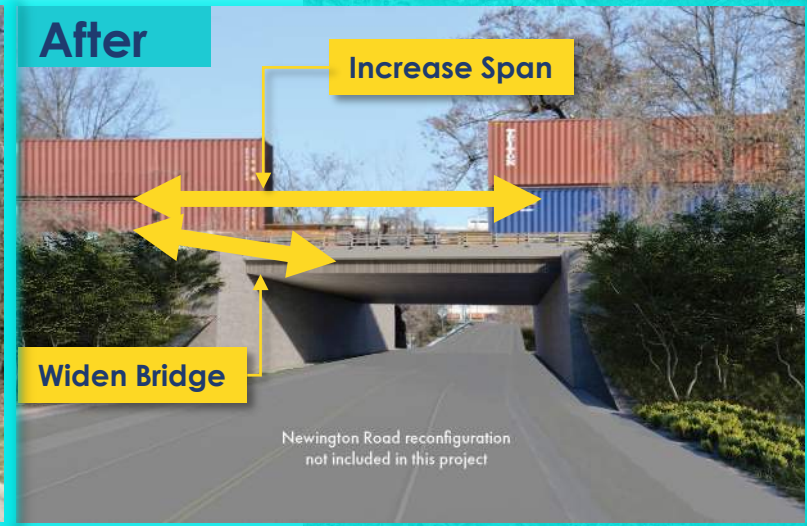


LEGEND	
	Existing
	Proposed

Dimensions based on 60% design plans, subject to change

Franconia Corridor Projects

- **Franconia to Lorton 3rd Track**
 - Multi-modal benefits
- Franconia-Springfield Station Improvements
- Franconia-Springfield Bypass



New rail bridge at Newington Road allows for needed road widening



Franconia Corridor Projects

- Franconia to Lorton 3rd Track
- **Franconia-Springfield Station Improvements**
- Franconia-Springfield Bypass



Franconia Corridor Projects

- Franconia to Lorton 3rd Track
- Franconia-Springfield Station Improvements
- **Franconia-Springfield Bypass**





- 0.9 mi. flyover bridge
- Up to 70 trains/day
- CM/GC delivery
- Design at 30%
- ROW, permitting, utility coordination in progress
- Awarded \$100M FRA grant September 2023

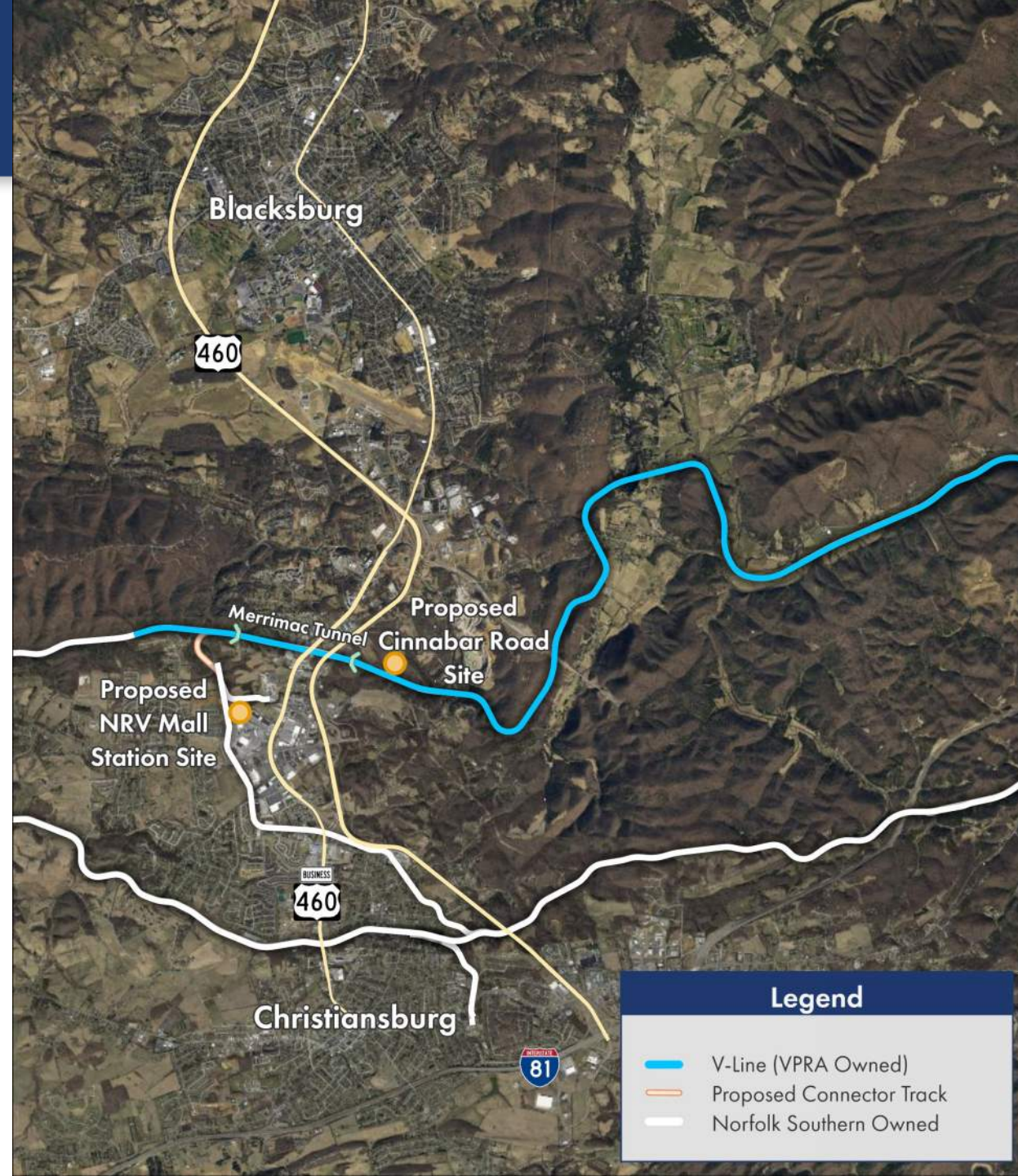


New River Valley Expansion



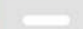


NRV – Merrimac Tunnel

- Original tunnel constructed in 1914
- VPRA to construct new egress path and stair access



Legend

-  V-Line (VPRA Owned)
-  Proposed Connector Track
-  Norfolk Southern Owned

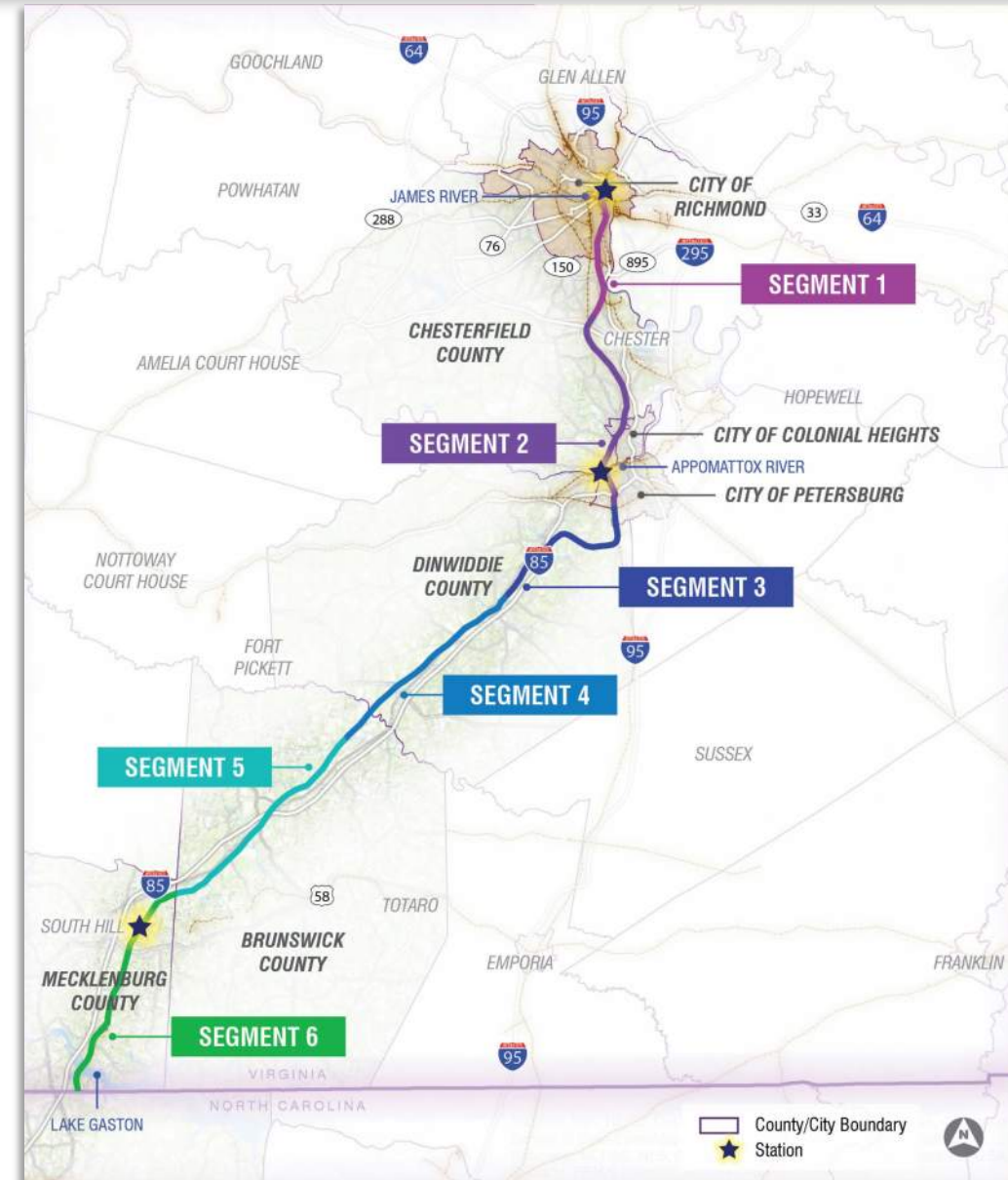


Upcoming Opportunities

Richmond to Raleigh – Preliminary Engineering

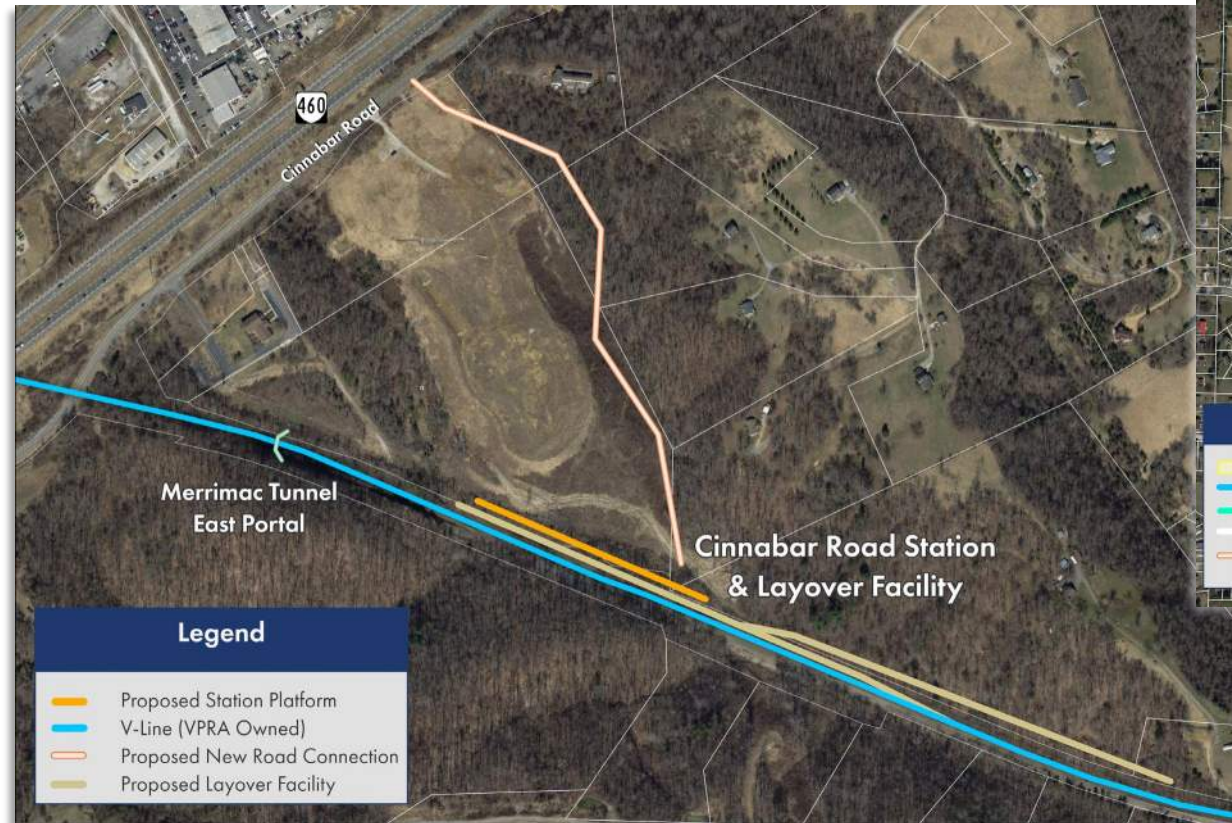
- Six segment awards
- Coordination with VDOT / Utilities / Public
- Anticipated design/engineering services:
 - Rail
 - Roadway
 - Structures
 - Geotech
 - Drainage
 - ESC
 - Traffic/MOT
 - Utilities
 - ROW
 - Survey

Segment	Miles	Key Features
Segment 1 RR-VA-1 Richmond to Bellwood	9.9	• Existing viaduct through downtown and over James River to remain
Segment 2 RR-VA-2 Bellwood to Petersburg	15.7	• proposed major rail bridge over Appomattox River
Segment 3 RR-VA-3 Petersburg to Dinwiddie	19.5	• Inactive S Line corridor begins in this segment • 5 proposed rail bridges over minor streams
Segment 4 RR-VA-4 Dinwiddie to Warfield	13.2	• 2 proposed rail bridges over minor streams
Segment 5 RR-VA-5 Warfield to La Crosse	18.6	• 2 proposed rail bridges over minor streams
Segment 6 RR-VA-6 La Crosse to Paschall	17.8	• 1 proposed rail bridge over Taylors Creek • 1 existing rail bridge to remain over Lake Gaston



New River Valley – 60% Design

- Three potential awards
 - Christiansburg Mall Platform
 - Cinnabar Road Platform
 - V-Line tunnels



King & Commonwealth Bridges - Construction

- Phased bridge replacements
- May include Alexandria Station Improvements Project



Other Design/Construction Opportunities

- VPRA-led Procurements
 - Leeland Road Highway Bridge (Stafford County)
 - Washington Highway Bridge (Hanover County)
 - Ettrick/Petersburg Station (Chesterfield County)
 - Richmond Layover Facility
- Partners & Projects
 - CSX Alexandria 4th Track Fiber Ductbank Relocation: RFP October 2023
 - CSX Alexandria 4th Track Mainline
 - CSX Franconia – Lorton 3rd Track Mainline
 - Long Bridge
 - Franconia-Springfield Bypass

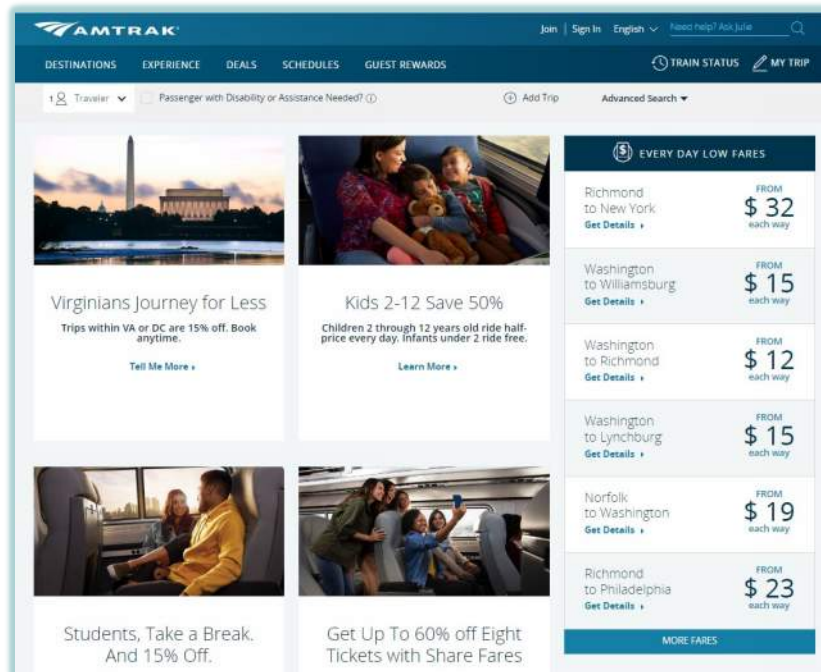


Small Business (SWaM & DBE) Utilization

- To maximize community engagement and the use of DSBSD certified small businesses, VPRA actively promotes the inclusion of diverse businesses within its procurements.
- Proposers shall ensure that DSBSD-certified small businesses have the maximum opportunity to participate in Projects through subcontract opportunities.
- Proposers shall be prepared to submit a Comprehensive Small Business Utilization Approach on all VPRA procurements.
- This includes utilization of firms certified as small and any subcategory of small, small women-owned, small minority-owned, micro, DBE or small service-disabled veteran-owned businesses.
- There will be substantial opportunities for small businesses to participate in VPRA projects, particularly within secondary NAICs code categories.

Online Resources

- Procurement: vapassengerrailauthority.com/procurement/currentrfps
- TRV Projects: vapassengerrailauthority.org/transformingrail
- LinkedIn: [linkedin.com/company/virginia-passenger-rail-authority](https://www.linkedin.com/company/virginia-passenger-rail-authority)
- Amtrak Virginia: amtrak.com/virginia
- VRE: vre.org



The screenshot shows the Amtrak website interface. At the top, there are navigation links for DESTINATIONS, EXPERIENCE, DEALS, SCHEDULES, and GUEST REWARDS. Below this, there are search filters for 'Traveller' and 'Passenger with Disability or Assistance Needed?'. The main content area features several promotional tiles: 'Virginians Journey for Less' (15% off), 'Kids 2-12 Save 50%' (half-price), and 'EVERY DAY LOW FARES'. A list of routes with prices is shown on the right:

Route	Price (each way)
Richmond to New York	FROM \$32
Washington to Williamsburg	FROM \$15
Washington to Richmond	FROM \$12
Washington to Lynchburg	FROM \$15
Norfolk to Washington	FROM \$19
Richmond to Philadelphia	FROM \$23

Current Contracting Opportunities

VPRA contracts with various parties to provide specific services. Please contact John Kostyniuk, Director of Procurement, at 804-339-2604 or john.kostyniuk@vpva.virginia.gov for additional questions and information.

Project Management Information System	+
Franconia-Springfield Bypass	+
Long Bridge Project - North Package	+
Long Bridge Project - South Package	+
Partner Opportunities	+



Virginia Passenger Rail Authority
919 East Main Street, Suite 2400, Richmond, VA 23219
Phone: 804-303-8700
Email: contracting@vpva.virginia.gov

Contact
ADA
FOIA

Site Map
Non-Discrimination
Privacy Policy



Thank you!

Questions?

geoff.pelletier@vpra.virginia.gov

